



## LOAD CHARTS for Use in CCO Written Examinations

# LINK-BELT HC-238H

This load chart has been adapted from the original manufacturer's load chart for use in CCO written examinations.

It is not to be used for any other purpose.

# HC-238H Lattice Boom Crane Lifting Capacities

PCSA Class 12-821  
Refer to notes page 12

**Boom** - Tube; 70" (1.77 m) wide, 62" (1.57 m) deep with open throat top section and 26' (7.92 m) live mast.

**Jib** - Tube; 36" (.91 m) wide, 30" (.76 m) deep.

**Mounting** - rubber tire mobile base: Link-Belt; 8x4 drive, 260" (6.60 m) wheelbase, 11' 0" (3.35 m) wide.

**Counterweights:**

- "A" Upper - 23,000 lbs. (10 433 kg)
- "AB" Upper - 42,330 lbs. (19 201 kg)
- "ABC" Upper - 69,000 lbs. (31 298 kg)
- "A" Bumper - 13,500 lbs. (6 124 kg)

**Maximum boom or boom + jib machine on outriggers can lift off ground unassisted - without load**

Standard HC-238H must be equipped with the counterweights listed below when the indicated boom or boom + jib lengths are used.	Boom or boom + jib lengths allowed	On Outriggers							
		Over Rear				Over Side			
		Boom		Boom + Jib		Boom		Boom + Jib	
		Feet	meters	Feet	meters	Feet	meters	Feet	meters
Ctwt. 0 + 0	Minimum	50	15.24	n/a	n/a	50	15.24	n/a	n/a
	Maximum	160	48.77	n/a	n/a	140	42.67	n/a	n/a
Ctwt. A + 0	Minimum	50	15.24	n/a	n/a	50	15.24	n/a	n/a
	Maximum	190	57.91	n/a	n/a	180	54.86	n/a	n/a
Ctwt. AB + 0	Minimum	50	15.24	n/a	n/a	50	15.24	n/a	n/a
	Maximum	220	67.06	n/a	n/a	200	60.96	n/a	n/a
Ctwt. AB + A	Minimum	50	15.24	n/a	n/a	50	15.24	n/a	n/a
	Maximum	240	73.15	n/a	n/a	210	64.01	n/a	n/a
Ctwt. ABC + 0	Minimum	50	15.24	50 + 30	15.24 + 9.14	50	15.24	50 + 30	15.24 + 9.14
	Maximum	240	73.15	210 + 70	64.01 + 21.34	240	73.15	200 + 70	60.96 + 21.34
Ctwt. ABC + A	Minimum	100	30.48	100 + 30	30.48 + 9.14	100	30.48	100 + 30	30.48 + 9.14
	Maximum	240	73.15	210 + 70	64.01 + 21.34	240	73.15	210 + 70	64.01 + 21.34

**Maximum boom machine on tires can lift off ground unassisted - without load**

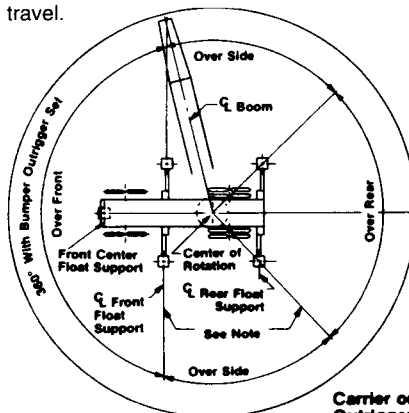
Standard HC-238H must be equipped with the counterweights listed below when the indicated boom lengths are used.	Boom lengths allowed	On Tires			
		Over Rear		Over Side	
		Boom		Boom	
		Feet	meters	Feet	meters
Ctwt. 0 + 0	Minimum	50	15.24	n/a	n/a
	Maximum	100	30.48	n/a	n/a
Ctwt. A + 0	Minimum	50	15.24	n/a	n/a
	Maximum	130	39.62	n/a	n/a
Ctwt. AB + 0	Minimum	50	15.24	n/a	n/a
	Maximum	160	48.77	n/a	n/a
Ctwt. AB + A	Minimum	50	15.24	n/a	n/a
	Maximum	180	54.86	n/a	n/a
Ctwt. ABC + 0	Minimum	50	15.24	n/a	n/a
	Maximum	190	57.91	n/a	n/a
Ctwt. ABC + A	Minimum	100	30.48	n/a	n/a
	Maximum	210	64.01	n/a	n/a

**Note:** See Operator's Manual for allowable jobsite travel.

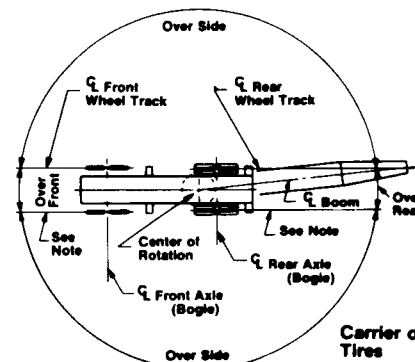
## Working Areas

- These lines determine the limiting position of any load for operation within working areas indicated.

**Caution:** This material is for reference only. Operator must refer to in-cab Crane Rating Manual to determine allowable machine lifting capacities and operating procedures.



Carrier on Outriggers



Carrier on Tires

# HC-238H Lift Crane Capacities - On Outriggers

Boom Length (ft.)	Load Radius (ft.)	Boom Angle (degree)	Capacities (lbs.) - On Outriggers						Capacities (lbs.) - On Outriggers					
			Over Rear						360 Degree Rotation					
			0 + 0 ctwt.	"A" + 0 ctwt.	"AB" + 0 ctwt.	"AB" + "A" ctwt.	"ABC" + 0 ctwt.	"ABC" + "A" ctwt.	0 + 0 ctwt.	"A" + 0 ctwt.	"AB" + 0 ctwt.	"AB" + "A" ctwt.	"ABC" + 0 ctwt.	"ABC" + "A" ctwt.
35' <sup>⊙</sup> (10.67 m)	10	82.0	--	--	--	--	--	--	--	--	--	300,000*	--	--
	15	72.9	--	--	--	--	--	--	--	--	--	206,900*	--	--
	20	63.2	--	--	--	--	--	--	--	--	--	156,200*	--	--
	35	17.6	--	--	--	--	--	--	--	--	--	63,900*	--	--
50' (15.24 m)	12	79.6	213,200*	234,100*	250,000*	250,000*	250,000*	↑	213,200*	234,100*	250,000*	250,000*	250,000*	↑
	13	78.4	197,900*	217,400*	236,300*	236,300*	249,600*		197,900*	217,400*	236,300*	236,300*	249,600*	
	14	77.2	184,500*	202,800*	220,500*	220,500*	237,600*		184,500*	202,800*	220,500*	220,500*	237,600*	
	15	76.1	172,900*	190,000*	206,600*	206,600*	226,600*		172,900*	190,000*	206,600*	206,600*	226,600*	
	16	74.9	162,500*	178,700*	194,300*	194,300*	213,700*		162,500*	178,700*	194,300*	194,300*	213,700*	
	17	73.7	153,300*	168,600*	183,300*	183,300*	201,800*		149,700	168,600*	183,300*	183,300*	201,800*	
	18	72.5	145,100*	159,500*	173,600*	173,600*	191,000*		129,100	159,500*	173,600*	173,600*	191,000*	
	19	71.3	129,200	151,400*	164,700*	164,700*	181,200*		113,300	151,400*	164,700*	164,700*	181,200*	
	20	70.1	115,800	144,000*	156,700*	156,700*	172,500*		100,900	144,000*	156,700*	156,700*	172,500*	
	25	63.8	75,500	105,900	125,800*	125,800*	138,500*		64,400	96,400	125,500	125,800*	138,500*	
	30	57.3	55,400	78,200	98,800	98,800	115,400*		46,600	70,400	92,000	98,200	115,400*	
	35	50.1	43,300	61,500	78,000	78,000	89,500*		36,000	55,000	72,200	77,100	94,600	
	40	42.2	35,200	50,400	64,200	64,200	77,600		29,000	44,800	59,100	63,200	77,700	
50	19.8	25,000	36,400	46,700	46,700	50,400*	20,200	32,000	42,700	45,700	50,400*			
60' (18.29 m)	13	80.0	192,300*	211,300*	229,600*	229,600*	237,200*	N/A	192,300*	211,300*	229,600*	229,600*	237,200*	N/A
	14	79.4	184,200*	202,400*	220,000*	220,000*	234,200*		184,200*	202,400*	220,000*	220,000*	234,200*	
	15	78.4	172,600*	189,600*	206,100*	206,100*	226,000*		172,600*	189,600*	206,100*	206,100*	226,000*	
	16	77.4	162,200*	178,400*	194,000*	194,000*	213,300*		162,200*	178,400*	194,000*	194,000*	213,300*	
	17	76.5	153,100*	168,300*	183,000*	183,000*	201,400*		150,700	168,300*	183,000*	183,000*	201,400*	
	18	75.5	144,800*	159,300*	173,300*	173,300*	190,600*		130,000	159,300*	173,300*	173,300*	190,600*	
	19	74.5	129,900	151,200*	164,400*	164,400*	180,900*		114,000	151,200*	164,400*	164,400*	180,900*	
	20	73.5	116,400	143,800*	156,500*	156,500*	172,200*		101,600	143,800*	156,500*	156,500*	172,200*	
	25	68.4	75,900	106,300	125,600*	125,600*	138,300*		64,900	96,900	125,600*	125,600*	138,300*	
	30	63.2	55,700	78,500	99,100	99,100	104,600*		46,900	70,700	92,300	98,500	115,300*	
	35	57.7	43,600	61,800	78,300	78,300	89,400*		36,300	55,300	72,400	77,300	94,900	
	40	51.9	35,400	50,600	64,400	64,400	77,800*		29,200	45,100	59,300	63,400	77,900	
	50	38.4	25,200	36,600	46,900	46,900	57,100		20,500	32,300	43,000	46,000	56,900	
60	18.1	19,000	28,100	36,400	36,400	41,500*	15,200	24,600	33,100	35,500	41,500*			
70' (21.34 m)	15	80.0	171,600*	188,500*	204,900*	204,900*	211,100*	↓	171,600*	188,500*	204,900*	204,900*	211,100*	↓
	16	79.3	162,500*	178,600*	194,100*	194,100*	207,800*		162,400*	178,600*	194,100*	194,100*	207,800*	
	17	78.4	153,300*	168,500*	183,200*	183,200*	201,500*		153,000	168,500*	183,200*	183,200*	201,500*	
	18	77.6	145,100*	159,400*	173,500*	173,500*	190,800*		132,000	159,400*	173,500*	173,500*	190,800*	
	19	76.7	131,500	151,400*	164,600*	164,600*	181,100*		115,800	151,400*	164,600*	164,600*	181,100*	
	20	75.9	117,800	144,000*	156,700*	156,700*	172,400*		103,100	144,000*	156,700*	156,700*	172,400*	
	25	71.6	76,900	107,200	125,800*	125,800*	138,500*		65,900	97,800	125,800*	125,800*	138,500*	
	30	67.3	56,400	79,100	99,700	99,700	115,400*		47,600	71,400	93,000	99,200	115,400*	
	35	62.8	44,100	62,300	78,800	78,800	89,500*		36,900	55,800	73,000	77,900	95,400	
	40	58.0	35,900	51,000	64,800	64,800	77,900*		29,700	45,400	59,800	63,800	78,400	
	50	47.8	25,500	37,000	47,200	47,200	57,400		20,900	32,600	43,300	46,300	57,200	
60	35.4	19,400	28,400	36,700	36,700	44,800	15,500	24,900	33,400	35,900	44,600			
70	16.7	15,100	22,700	29,600	29,600	36,300	11,900	19,700	26,800	28,800	36,100			
80' (24.38 m)	17	80.0	154,200*	169,500*	184,200*	184,200*	188,500*	↓	154,200*	169,500*	184,200*	184,200*	188,500*	↓
	17	79.9	152,900*	168,000*	182,600*	182,600*	187,900*		152,900*	168,000*	182,600*	182,600*	187,900*	
	18	79.2	144,600*	159,000*	172,900*	172,900*	185,000*		132,400	159,000*	172,900*	172,900*	185,000*	
	19	78.4	131,800	150,900*	164,100*	164,100*	180,500*		116,100	150,900*	164,100*	164,100*	180,500*	
	20	77.7	118,000	143,500*	156,200*	156,200*	171,900*		103,400	143,500*	156,200*	156,200*	171,900*	
25	74.0	77,000	107,300	125,400*	125,400*	138,100*	66,000	98,000	125,400*	125,400*	138,100*			

⊙ Requires hammerhead tip.

# HC-238H Lift Crane Capacities - On Outriggers

Boom Length (ft.)	Load Radius (ft.)	Boom Angle (degree)	Capacities (lbs.) - On Outriggers						Capacities (lbs.) - On Outriggers					
			Over Rear						360 Degree Rotation					
			0 + 0 ctwt.	"A" + 0 ctwt.	"AB" + 0 ctwt.	"AB" + "A" ctwt.	"ABC" + 0 ctwt.	"ABC" + "A" ctwt.	0 + 0 ctwt.	"A" + 0 ctwt.	"AB" + 0 ctwt.	"AB" + "A" ctwt.	"ABC" + 0 ctwt.	"ABC" + "A" ctwt.
80' (24.38 m)	30	70.2	56,400	79,200	99,700	104,400*	115,100*	--	47,700	71,500	93,000	99,200	115,100*	--
	35	66.4	44,100	62,300	78,700	89,200*	98,400*	--	36,900	55,800	73,000	77,900	95,400	--
	40	62.4	35,900	51,000	64,800	77,600*	82,700	--	29,700	45,400	59,700	63,800	78,300	--
	50	54.0	25,500	36,900	47,200	60,700	67,000	--	20,900	32,600	43,300	46,200	57,100	--
	60	44.5	19,300	28,400	36,700	44,800	47,400	--	15,500	24,800	33,400	35,800	44,500	--
	70	33.1	15,100	22,700	29,600	36,300	38,600	--	11,900	19,800	26,800	28,800	36,100	--
	80	15.6	12,100	18,600	24,500	30,300	32,200	--	9,300	16,000	22,100	23,800	30,000	--
90' (27.43 m)	19	80.0	138,600	153,700*	167,100*	167,100*	169,300*	--	122,800	153,700*	167,100*	167,100*	169,300*	--
	19	79.7	132,000	150,400*	163,500*	163,500*	168,300*	--	116,400	150,400*	163,500*	163,500*	168,300*	--
	20	79.1	118,200	143,000*	155,700*	155,700*	166,200*	--	103,700	143,000*	155,700*	155,700*	166,200*	--
	25	75.8	77,000	107,300	125,000*	125,000*	137,600*	--	66,100	98,000	125,000*	125,000*	137,600*	--
	30	72.5	56,400	79,100	99,700	104,000*	114,600*	--	47,700	71,500	93,000	99,200	114,700*	--
	35	69.1	44,100	62,200	78,700	88,900*	98,000*	--	36,900	55,800	72,900	77,800	95,300	--
	40	65.7	35,800	50,900	64,700	77,300*	82,600	--	29,600	45,300	59,600	63,700	78,200	--
	50	58.5	25,400	36,800	47,000	57,200	60,600	--	20,800	32,500	43,200	46,100	57,000	--
	60	50.7	19,200	28,300	36,600	44,700	47,300	--	15,400	24,700	33,300	35,700	44,400	--
	70	41.8	15,100	22,600	29,500	36,200	38,500	--	11,800	19,700	26,700	28,700	35,900	--
100' (30.48 m)	80	31.1	12,000	18,600	24,400	30,200	32,100	--	9,300	16,000	22,000	23,700	29,900	--
	90	14.7	9,700	15,400	20,600	25,600	27,300	--	7,300	13,100	18,400	20,000	25,300	--
	20	80.0	114,500	140,300*	152,800*	152,800*	153,300*	153,300*	100,300	140,300*	152,800*	152,800*	153,300*	153,300*
	25	77.3	77,000	107,300	124,500*	124,500*	137,100*	137,100*	66,100	98,000	124,500*	124,500*	137,100*	137,100*
	30	74.3	56,300	79,000	99,600	103,600*	114,200*	114,200*	47,600	71,400	92,900	99,100	114,200*	114,200*
	35	71.3	44,000	62,100	78,500	88,500*	97,600*	97,600*	36,800	55,700	72,800	77,700	95,200	97,600*
	40	68.3	35,700	50,800	64,600	76,900*	82,400	85,100*	29,500	45,200	59,500	63,600	78,100	82,200
	50	61.9	25,200	36,700	46,900	57,000	60,400	67,200*	20,700	32,300	43,000	45,900	56,900	59,900
	60	55.2	19,100	28,100	36,400	44,500	47,100	55,100*	15,300	24,600	33,100	35,500	44,300	46,600
	70	47.9	14,900	22,500	29,300	36,100	38,300	45,100	11,700	19,500	26,500	28,500	35,800	37,800
110' (33.53 m)	80	39.6	11,900	18,400	24,200	30,000	32,000	37,800	9,100	15,800	21,900	23,500	29,700	31,500
	90	29.5	9,600	15,300	20,500	25,500	27,200	32,200	7,200	13,000	18,400	19,900	25,200	26,700
	100	14.0	7,800	12,900	17,500	22,000	23,400	25,400*	5,600	10,800	15,500	16,900	21,700	23,000
	22	80.0	97,200	129,000*	139,600*	139,600*	139,600*	139,600*	84,500	124,500	139,600*	139,600*	139,600*	139,600*
	25	78.4	77,000	107,300	124,000*	124,000*	134,000*	134,000*	66,100	98,000	124,000*	124,000*	134,000*	134,000*
	30	75.8	56,300	78,900	99,500	103,200*	113,700*	113,700*	47,500	71,300	92,800	99,000	113,700*	113,700*
	35	73.1	43,900	62,000	78,400	88,100*	97,200*	97,200*	36,700	55,600	72,600	77,600	95,000	97,200*
	40	70.3	35,500	50,600	64,400	76,500*	82,300	84,700*	29,400	45,100	59,400	63,500	77,900	82,000
	50	64.7	25,100	36,500	46,700	56,800	60,200	66,800*	20,500	32,200	42,900	45,800	56,700	59,700
	60	58.8	18,900	27,900	36,200	44,300	46,900	54,700*	15,100	24,400	32,900	35,400	44,100	46,400
120' (36.58 m)	70	52.4	14,700	22,300	29,100	35,900	38,100	44,900	11,500	19,400	26,300	28,300	35,600	37,600
	80	45.5	11,700	18,200	24,000	29,800	31,800	37,500	8,900	15,700	21,700	23,300	29,500	31,300
	90	37.7	9,400	15,200	20,300	25,300	27,000	32,100	7,000	12,900	18,200	19,700	25,000	26,500
	100	28.1	7,700	12,700	17,300	21,800	23,300	27,800	5,500	10,700	15,400	16,800	21,600	22,800
	110	13.3	6,200	10,800	14,900	19,000	20,300	22,400*	4,200	8,900	13,200	14,400	18,700	19,900
	24	80.0	84,300	117,100	126,700*	126,700*	126,700*	126,700*	72,600	107,500	126,700*	126,700*	126,700*	126,700*
	25	79.4	76,900	107,200	123,500*	123,500*	125,100*	125,100*	66,100	97,900	123,500*	123,500*	125,100*	125,100*
	30	77.0	56,200	78,800	99,300	102,700*	113,300*	113,300*	47,400	71,200	92,700	98,900	113,300*	113,300*
	35	74.5	43,800	61,900	78,200	87,700*	96,800*	96,800*	36,600	55,400	72,500	77,400	94,800	96,800*
	40	72.0	35,400	50,400	64,200	76,100*	82,100	84,300*	29,300	44,900	59,200	63,300	77,700	81,800
50	66.9	24,900	36,300	46,500	56,600	60,000	66,500*	20,300	32,000	42,700	45,600	56,500	59,500	
60	61.6	18,700	27,700	36,000	44,100	46,600	54,400*	14,900	24,200	32,700	35,200	43,900	46,100	
70	56.0	14,500	22,100	28,900	35,600	37,900	44,700	11,300	19,200	26,100	28,100	35,400	37,400	
80	50.1	11,500	18,000	23,800	29,600	31,500	37,300	8,700	15,500	21,500	23,100	29,300	31,100	

# HC-238H Lift Crane Capacities - On Outriggers

Boom Length (ft.)	Load Radius (ft.)	Boom Angle (degree)	Capacities (lbs.) - On Outriggers						Capacities (lbs.) - On Outriggers					
			Over Rear						360 Degree Rotation					
			0 + 0 cwt.	"A" + 0 cwt.	"AB" + 0 cwt.	"AB" + "A" cwt.	"ABC" + 0 cwt.	"ABC" + "A" cwt.	0 + 0 cwt.	"A" + 0 cwt.	"AB" + 0 cwt.	"AB" + "A" cwt.	"ABC" + 0 cwt.	"ABC" + "A" cwt.
120' (36.58 m)	90	43.5	9,200	14,900	20,100	25,100	26,800	31,800	6,800	12,700	18,000	19,500	24,800	26,300
	100	36.0	7,500	12,500	17,100	21,600	23,000	27,500	5,300	10,500	15,200	16,600	21,400	22,600
	110	26.9	6,000	10,600	14,700	18,800	20,100	24,100	4,100	8,800	13,000	14,200	18,600	19,800
	120	12.7	4,800	9,000	12,700	16,400	17,700	19,500*	3,000	7,300	11,200	12,300	16,200	17,300
130' (39.62 m)	26	80.0	74,000	103,200	116,000*	116,000*	116,000*	116,000*	63,500	94,200	116,000*	116,000*	116,000*	116,000*
	30	78.0	56,000	78,700	99,200	102,200*	110,200*	110,200*	47,300	71,100	92,500	98,700	110,200*	110,200*
	35	75.7	43,600	61,700	78,100	87,200*	96,300*	96,300*	36,400	55,300	72,300	77,200	94,700	96,300*
	40	73.4	35,200	50,200	64,000	75,700*	81,900	83,800*	29,100	44,900	59,000	63,100	77,600	81,600
	50	68.8	24,700	36,100	46,300	56,400	59,800	66,100*	20,200	31,800	42,500	45,300	56,300	59,300
	60	64.0	18,500	27,500	35,800	43,900	46,400	54,000*	14,700	24,000	32,500	34,900	43,600	45,900
	70	59.0	14,300	21,900	28,700	35,400	37,700	44,400	11,100	18,900	25,900	27,900	35,100	37,200
	80	53.7	11,300	17,800	23,600	29,400	31,300	37,100	8,500	15,200	21,300	22,900	29,100	30,800
	90	48.0	9,000	14,700	19,900	24,800	26,500	31,600	6,600	12,500	17,800	19,300	24,600	26,100
	100	41.7	7,200	12,300	16,900	21,400	22,800	27,300	5,100	10,300	15,000	16,300	21,200	22,500
	110	34.6	5,800	10,400	14,500	18,600	19,900	23,900	3,900	8,500	12,800	14,000	18,300	19,500
	120	25.8	4,600	8,800	12,600	16,200	17,500	21,200	2,900	7,100	11,000	12,100	16,000	17,100
	130	12.2	3,600	7,400	10,900	14,300	15,400	17,000*	--	5,900	9,400	10,400	14,100	15,100
140' (42.67 m)	27	80.0	65,900	92,000	105,500*	105,500*	105,500*	105,500*	56,100	83,800	105,500*	105,500*	105,500*	105,500*
	30	78.9	55,900	78,500	99,000	101,800*	102,900*	102,900*	47,200	70,900	92,400	98,600	102,900*	102,900*
	35	76.8	43,400	61,500	77,900	86,800*	95,800*	95,800*	36,300	55,100	72,200	77,100	94,500	95,800*
	40	74.7	35,000	50,000	63,800	75,300*	81,600	83,400*	28,900	44,700	58,800	62,900	77,300	81,400
	50	70.4	24,500	35,900	46,000	56,200	59,500	65,700*	20,000	31,600	42,300	45,100	56,000	59,100
	60	66.0	18,300	27,300	35,500	43,600	46,200	53,600*	14,500	23,700	32,300	34,700	43,400	45,700
	70	61.4	14,100	21,700	28,400	35,200	37,400	44,200	10,900	18,700	25,600	27,700	34,900	36,900
	80	56.6	11,000	17,600	23,300	29,100	31,000	36,800	8,300	15,000	21,100	22,600	28,800	30,600
	90	51.6	8,800	14,500	19,700	24,600	26,200	31,300	6,300	12,200	17,500	19,000	24,300	25,800
	100	46.1	7,000	12,100	16,700	21,200	22,500	27,000	4,800	10,000	14,800	16,100	20,900	22,300
	110	40.1	5,600	10,100	14,300	18,300	19,700	23,600	3,600	8,300	12,600	13,800	18,100	19,300
	120	33.3	4,400	8,600	12,300	16,000	17,200	20,900	2,600	6,900	10,700	11,800	15,800	16,900
	130	24.8	3,400	7,200	10,700	14,100	15,200	18,600	--	5,700	9,200	10,200	13,800	14,900
	140	11.8	2,600	6,100	9,300	12,400	13,400	14,800*	--	4,700	7,900	8,900	12,200	13,100
150' (45.72 m)	29	80.0	59,100	82,900	96,700*	96,700*	96,700*	96,700*	50,100	75,100	96,700*	96,700*	96,700*	96,700*
	30	79.6	55,800	78,400	96,000*	96,000*	96,000*	96,000*	47,100	70,800	92,200	96,000*	96,000*	96,000*
	35	77.7	43,300	61,300	77,700	86,400*	91,800*	91,800*	36,100	55,000	72,000	76,900	91,800*	91,800*
	40	75.7	34,800	49,800	63,600	74,800*	81,400	83,000*	28,700	44,500	58,600	62,700	77,100	81,200
	50	71.7	24,200	35,600	45,800	55,900	59,300	65,300*	19,800	31,400	42,100	44,900	55,800	58,900
	60	67.6	18,100	27,000	35,300	43,400	45,900	53,200*	14,300	23,500	32,000	34,500	43,200	45,400
	70	63.4	13,800	21,500	28,200	34,900	37,200	43,900	10,600	18,500	25,400	27,400	34,700	36,700
	80	59.1	10,800	17,300	23,100	28,800	30,800	36,600	8,000	14,800	20,800	22,400	28,600	30,300
	90	54.5	8,500	14,200	19,400	24,300	26,000	31,100	6,100	12,000	17,300	18,800	24,000	25,600
	100	49.7	6,700	11,800	16,400	20,900	22,400	26,800	4,600	9,800	14,500	15,900	20,700	22,000
	110	44.5	5,300	9,900	14,000	18,100	19,400	23,300	3,400	8,100	12,300	13,500	17,800	19,100
	120	38.7	4,200	8,300	12,100	15,800	17,000	20,700	2,400	6,600	10,500	11,600	15,500	16,600
	130	32.1	3,200	7,000	10,400	13,800	14,900	18,300	--	5,400	9,000	10,000	13,600	14,600
	140	24.0	2,300	5,900	9,000	12,200	13,200	16,300	--	4,400	7,700	8,600	12,000	12,900
150	11.4	--	4,900	7,800	11,700	12,700	15,700	--	3,600	6,600	7,400	10,500	11,400	
160' (48.77 m)	31	80.0	53,300	75,100	88,000*	88,000*	88,000*	88,000*	45,000	67,800	88,000*	88,000*	88,000*	88,000*
	35	78.4	43,100	61,200	77,500	85,200*	85,200*	85,200*	36,000	54,800	71,800	76,700	85,200*	85,200*
	40	76.6	34,600	49,600	63,400	74,400*	81,200	82,000*	28,500	44,400	58,400	62,500	76,900	81,000
	50	72.9	24,000	35,400	45,500	55,700	59,100	64,900*	19,500	31,100	41,800	44,900	55,600	58,600
	60	69.1	17,800	26,800	35,000	43,200	45,600	52,800*	14,100	23,300	31,800	34,200	42,900	45,100

# HC-238H Lift Crane Capacities - On Outriggers

Boom Length (ft.)	Load Radius (ft.)	Boom Angle (degree)	Capacities (lbs.) - On Outriggers						Capacities (lbs.) - On Outriggers					
			Over Rear						360 Degree Rotation					
			0 + 0 ctwt.	"A" + 0 ctwt.	"AB" + 0 ctwt.	"AB" + "A" ctwt.	"ABC" + 0 ctwt.	"ABC" + "A" ctwt.	0 + 0 ctwt.	"A" + 0 ctwt.	"AB" + 0 ctwt.	"AB" + "A" ctwt.	"ABC" + 0 ctwt.	"ABC" + "A" ctwt.
160' (48.77 m)	70	65.2	13,600	21,200	27,900	34,700	36,900	43,700	10,400	18,200	25,100	27,100	34,400	36,400
	80	61.2	10,500	17,100	22,800	28,600	30,500	36,300	7,800	14,500	20,600	22,300	28,300	30,000
	90	57.0	8,300	14,000	19,200	24,000	25,700	30,800	5,800	11,700	17,000	18,500	23,800	25,300
	100	52.7	6,500	11,600	16,200	20,700	22,200	26,500	4,300	9,500	14,300	15,600	20,400	21,800
	110	48.0	5,100	9,600	13,800	17,800	19,200	23,100	3,100	7,800	12,000	13,300	17,600	18,800
	120	43.0	3,900	8,000	11,800	15,500	16,700	20,400	2,100	6,400	10,200	11,300	15,300	16,400
	130	37.4	2,900	6,700	10,200	13,600	14,700	18,100	--	5,200	8,700	9,700	13,300	14,300
	140	31.1	2,100	5,600	8,800	11,900	12,900	16,100	--	4,200	7,400	8,400	11,700	12,600
	150	23.2	--	4,600	7,600	10,500	11,500	14,400	--	3,300	6,300	7,200	10,300	11,200
160	11.0	--	3,800	6,500	9,300	10,200	11,100*	--	2,600	5,400	6,200	9,100	9,900	
170' (51.82 m)	32	80.0	↑	68,500	81,000*	81,000*	81,000*	81,000*	↑	61,800	80,800	81,000*	81,000*	81,000*
	35	79.1	↑	61,000	77,300	79,500*	79,500*	79,500*	↑	54,600	71,600	76,500	79,500*	79,500*
	40	77.4	↑	49,400	63,200	73,900*	73,900*	76,500*	↑	44,200	58,200	62,300	76,500*	76,500*
	50	73.9	↑	35,200	45,300	55,400	58,800	64,400*	↑	30,900	41,600	44,600	55,300	58,400
	60	70.4	↑	26,500	34,800	42,900	45,400	52,400*	↑	23,000	31,500	34,000	42,700	44,900
	70	66.8	↑	21,000	27,600	34,400	36,600	43,400	↑	18,000	24,900	26,900	34,100	36,200
	80	63.0	↑	16,800	22,500	28,300	30,200	36,000	↑	14,300	20,300	22,100	28,000	29,800
	90	59.2	↑	13,700	18,900	23,700	25,400	30,500	↑	11,500	16,800	18,300	23,500	25,000
	100	55.2	↑	11,300	15,900	20,400	21,900	26,200	↑	9,300	14,000	15,300	20,200	21,500
	110	51.0	↑	9,400	13,500	17,600	18,900	22,800	↑	7,500	11,800	13,000	17,300	18,500
	120	46.5	↑	7,800	11,500	15,200	16,500	20,100	↑	6,100	10,000	11,100	15,000	16,100
	130	41.6	↑	6,500	9,900	13,300	14,400	17,800	↑	4,900	8,500	9,500	13,100	14,100
	140	36.3	↑	5,300	8,500	11,600	12,700	15,800	↑	3,900	7,200	8,100	11,400	12,400
150	30.1	↑	4,400	7,300	10,200	11,200	14,100	↑	3,000	6,100	6,900	10,000	10,900	
160	22.5	↑	3,500	6,300	9,000	9,900	12,600*	↑	2,300	5,100	5,900	8,800	9,600	
170	10.7	↑	2,800	5,400	7,900	8,800	9,500*	↑	--	4,300	5,000	7,700	8,500	
180' (54.86 m)	34	80.0	N/A	63,000	72,800*	72,800*	72,800*	72,800*	N/A	56,500	72,800*	72,800*	72,800*	72,800*
	35	79.7	N/A	60,800	72,800*	72,800*	72,800*	72,800*	N/A	54,400	71,400	72,800*	72,800*	72,800*
	40	78.1	N/A	49,200	63,000	71,100*	71,100*	71,100*	N/A	44,000	58,000	62,100	71,100*	71,100*
	50	74.8	N/A	34,900	45,000	55,200	58,600	63,500*	N/A	30,700	41,400	44,400	55,100	58,100
	60	71.5	N/A	26,200	34,500	42,600	45,100	51,900*	N/A	22,800	31,300	33,700	42,400	44,600
	70	68.1	N/A	20,700	27,400	34,100	36,400	43,100	N/A	17,700	24,600	26,600	33,900	35,900
	80	64.7	N/A	16,600	22,200	28,000	29,900	35,700	N/A	14,000	20,100	21,800	27,800	29,500
	90	61.1	N/A	13,400	18,600	23,500	25,100	30,200	N/A	11,200	16,500	18,000	23,200	24,700
	100	57.4	N/A	11,000	15,600	20,100	21,600	25,900	N/A	9,000	13,700	15,100	19,900	21,200
	110	53.5	N/A	9,100	13,200	17,300	18,600	22,500	N/A	7,300	11,500	12,700	17,000	18,300
	120	49.4	N/A	7,500	11,300	15,000	16,200	19,900	N/A	5,800	9,700	10,800	14,700	15,800
	130	45.1	N/A	6,200	9,600	13,000	14,100	17,500	N/A	4,600	8,200	9,200	12,800	13,800
	140	40.4	N/A	5,100	8,200	11,400	12,400	15,500	N/A	3,600	6,900	7,800	11,200	12,100
150	35.2	N/A	4,100	7,100	9,900	10,900	13,800	N/A	2,800	5,800	6,700	9,800	10,600	
160	29.3	N/A	3,300	6,000	8,700	9,600	12,300	N/A	--	4,800	5,700	8,500	9,300	
170	21.9	N/A	2,500	5,100	7,700	8,500	10,800*	N/A	--	4,000	4,800	7,500	8,200	
180	10.4	N/A	--	4,300	6,700	7,500	8,100*	N/A	--	3,300	4,000	6,500	7,200	
190' (57.91 m)	36	80.0	↓	58,000	63,300*	63,300*	63,300*	63,300*	↓	51,900	63,300*	63,300*	63,300*	63,300*
	40	78.8	↓	48,900	62,500*	62,500*	62,500*	62,500*	↓	43,800	57,800	61,900	62,500*	62,500*
	50	75.7	↓	34,700	44,800	54,900	58,300	59,200*	↓	30,400	41,100	44,200	54,800	57,900
	60	72.5	↓	26,000	34,300	42,400	44,800	51,400*	↓	22,500	31,000	33,500	42,200	44,600
	70	69.3	↓	20,400	27,100	33,800	36,100	42,900	↓	17,500	24,300	26,300	33,600	35,600
	80	66.1	↓	16,300	22,200	27,700	29,700	35,500	↓	13,700	19,800	21,500	27,500	29,200
	90	62.7	↓	13,200	18,300	23,200	24,900	29,900	↓	10,900	16,200	17,700	22,900	24,400
100	59.3	↓	10,700	15,300	19,900	21,400	25,600	↓	8,700	13,400	14,800	19,600	21,000	
110	55.7	↓	8,800	12,900	17,000	18,300	22,400	↓	7,000	11,200	12,400	16,800	18,000	

# HC-238H Lift Crane Capacities - On Outriggers

Boom Length (ft.)	Load Radius (ft.)	Boom Angle (degree)	Capacities (lbs.) - On Outriggers						Capacities (lbs.) - On Outriggers							
			Over Rear						360 Degree Rotation							
			0 + 0 cwt.	"A" + 0 cwt.	"AB" + 0 cwt.	"AB" + "A" cwt.	"ABC" + 0 cwt.	"ABC" + "A" cwt.	0 + 0 cwt.	"A" + 0 cwt.	"AB" + 0 cwt.	"AB" + "A" cwt.	"ABC" + 0 cwt.	"ABC" + "A" cwt.		
190' (57.91 m)	120	52.0	↑	7,200	11,000	14,700	15,900	19,600	↑	5,600	9,400	10,500	14,400	15,500		
	130	48.0		5,900	9,300	12,700	13,800	17,200		4,400	7,900	8,900	12,500	13,500		
	140	43.8		4,800	8,000	11,100	12,100	15,200		3,400	6,600	7,500	10,900	11,800		
	150	39.3		3,800	6,800	9,700	10,600	13,500		2,500	5,500	6,400	9,500	10,300		
	160	34.3		3,000	5,700	8,400	9,300	12,000		--	4,600	5,400	8,300	9,100		
	170	28.5		2,200	4,800	7,400	8,200	10,600*		--	3,700	4,500	7,200	7,900		
	180	21.3		--	4,000	6,400	7,200	9,200*		--	3,000	3,700	6,300	7,000		
	190	10.1		--	3,300	5,600	6,300	6,700*		--	2,300	3,000	5,400	6,100		
200' (60.96 m)	38	80.0	↑	↑	56,000*	56,000*	56,000*	56,000*	↑	56,000*	56,000*	56,000*	56,000*	56,000*		
	40	79.3			56,000*	56,000*	56,000*	56,000*		56,000*	56,000*	56,000*	56,000*	56,000*	56,000*	
	50	76.4			44,500	52,500*	52,500*	52,500*		40,900	43,900	52,500*	52,500*	44,300	44,300	
	60	73.4			34,000	42,100	44,500	47,600*		30,800	33,200	41,900	41,900	35,300	35,300	
	70	70.4			26,800	33,600	35,800	41,900*		24,000	26,100	33,300	33,300	28,900	28,900	
	80	67.3			21,900	27,500	29,400	35,200		19,500	21,300	27,200	27,200	24,100	24,100	
	90	64.2			18,100	22,900	24,600	29,600		16,000	17,500	22,600	22,600	20,700	20,700	
	100	61.0			15,100	19,600	21,100	25,300		13,200	14,500	19,300	19,300	17,700	17,700	
	110	57.6			12,700	16,700	18,100	22,100		10,900	12,200	16,500	16,500	15,300	15,300	
	120	54.2			10,700	14,400	15,600	19,300		9,100	10,200	14,200	14,200	13,200	13,200	
	130	50.6			9,100	12,400	13,600	16,900		7,600	8,600	12,200	12,200	11,500	11,500	
	140	46.7			7,700	10,800	11,800	14,900		6,300	7,300	10,600	10,600	10,000	10,000	
	150	42.7			6,500	9,400	10,300	13,200		5,200	6,100	9,200	9,200	8,800	8,800	
	160	38.3			5,400	8,200	9,000	11,800		4,300	5,100	8,000	8,000	7,700	7,700	
170	33.4	4,500	7,100	7,900	10,300*	3,400	4,200	6,900	6,900	6,700	6,700					
180	27.7	3,700	6,100	6,900	9,000*	2,700	3,400	6,000	6,000	5,800	5,800					
190	20.7	3,000	5,300	6,000	7,800*	2,100	2,700	5,100	5,100	5,000	5,000					
200	9.9	2,400	4,500	5,200	5,500*	--	2,100	4,400	4,400	--	--					
210' (64.01 m)	39	80.0	↑	N/A	49,500*	49,500*	49,500*	49,500*	↑	N/A	49,500*	49,500*	49,500*	49,500*		
	40	79.8			49,500*	49,500*	49,500*	49,500*			49,500*	49,500*	49,500*	49,500*	49,500*	
	50	77.1			44,600	46,700*	46,700*	46,700*			40,600	43,700	46,700*	46,700*	35,100	35,100
	60	74.2			33,700	41,800*	41,800*	41,800*			30,500	32,900	41,700	41,700	28,700	28,700
	70	71.4			26,500	33,300	35,500	37,600*			23,800	25,800	33,000	33,000	23,900	23,900
	80	68.5			21,700	27,200	29,100	33,800*			19,300	21,000	26,900	26,900	20,400	20,400
	90	65.5			17,800	22,600	24,300	29,300			15,700	17,200	22,300	22,300	17,400	17,400
	100	62.5			14,800	19,300	20,800	25,000			12,900	14,200	19,100	19,100	15,000	15,000
	110	59.4			12,400	16,400	17,800	21,800			10,700	11,900	16,200	16,200	12,900	12,900
	120	56.1			10,400	14,100	15,300	19,000			8,800	9,900	13,900	13,900	11,200	11,200
	130	52.8			8,800	12,100	13,300	16,600			7,300	8,300	11,900	11,900	9,800	9,800
	140	49.3			7,400	10,500	11,500	14,700			6,000	7,000	10,300	10,300	8,500	8,500
	150	45.6			6,200	9,100	10,000	12,900			4,900	5,800	8,900	8,900	7,400	7,400
	160	41.6			5,200	7,900	8,800	11,300*			4,000	4,800	7,700	7,700	6,400	6,400
170	37.3	4,200	6,800	7,600	9,800*	3,200	3,900	6,600	6,600	5,500	5,500					
180	32.5	3,500	5,800	6,600	8,500*	2,400	3,100	5,700	5,700	4,700	4,700					
190	27.0	2,700	5,000	5,700	7,400*	--	2,400	4,800	4,800	4,000	4,000					
200	20.2	2,100	4,200	5,000	6,300*	--	--	4,100	4,100	--	--					
210	9.6	--	3,600	4,200	4,300*	--	--	3,400	3,400	--	--					
220' (67.06 m)	41	80.0	↑	↑	43,500*	43,500*	43,500*	43,500*	↑	↑	43,500*	43,500*	43,500*	43,500*		
	50	77.7			41,400*	41,400*	41,400*	41,400*			40,400	41,400*	41,400*	37,200*	37,200*	
	60	75.0			33,500	37,200*	37,200*	37,200*			30,200	32,700	37,200*	37,200*	28,400	28,400
	70	72.3			26,200	33,000	33,500*	33,500*			23,500	25,500	32,800	32,800	23,600	23,600
	80	69.5			21,400	26,900	28,800	30,100*			19,000	20,700	26,600	26,600	20,100	20,100
	90	66.7			17,500	22,300	24,000	26,900*			15,400	16,900	22,300	22,300	--	--
100	63.8	14,500	19,000	20,500	23,900*	12,600	13,900	18,800	18,800	--	--					

# HC-238H Lift Crane Capacities - On Outriggers

Boom Length (ft.)	Load Radius (ft.)	Boom Angle (degree)	Capacities (lbs.) - On Outriggers						Capacities (lbs.) - On Outriggers						
			Over Rear						360 Degree Rotation						
			0 + 0 cwt.	"A" + 0 cwt.	"AB" + 0 cwt.	"AB" + "A" cwt.	"ABC" + 0 cwt.	"ABC" + "A" cwt.	0 + 0 cwt.	"A" + 0 cwt.	"AB" + 0 cwt.	"AB" + "A" cwt.	"ABC" + 0 cwt.	"ABC" + "A" cwt.	
220' (67.06 m)	110	60.9	↑	↑	12,100	16,100	17,500	19,800*	↑	↑	10,400	11,600	15,900	17,100	
	120	57.9			10,100	13,800	15,000	17,200*			8,500	9,600	13,600	14,700	
	130	54.7			8,500	11,800	13,000	15,100*			7,000	8,000	11,600	12,700	
	140	51.5			7,100	10,200	11,200	13,100*			5,700	6,700	10,000	10,900	
	150	48.1			5,900	8,800	9,700	11,400*			4,600	5,500	8,600	9,500	
	160	44.5			4,900	7,600	8,500	9,800*			3,700	4,500	7,400	8,200	
	170	40.6			3,900	6,500	7,300	8,400*			2,900	3,600	6,300	7,100	
	180	36.4			3,200	5,500	6,300	7,200*			2,100	2,800	5,400	6,100	
	190	31.8			2,400	4,700	5,400	6,100*			--	2,100	4,500	5,200	
	200	26.4			--	3,900	4,700	5,100*			--	--	3,800	4,400	
	210	19.8			--	3,300	3,900	4,200*			--	--	3,100	3,700	
220	9.4	--	2,700	3,300*	3,300*	--	--	2,500	3,100						
230' (70.10 m)	43	80.0	N/A	N/A	↑	38,700*	38,700*	38,700*	N/A	N/A	↑	38,700*	38,700*	38,700*	
	50	78.2				36,700*	36,700*	36,700*				36,700*	36,700*	36,700*	
	60	75.6				33,100*	33,100*	33,100*				33,100*	33,100*	33,100*	
	70	73.1				29,700*	29,700*	29,700*				29,700*	29,700*	29,700*	
	80	70.4				26,600	26,800*	26,600*				26,600*	20,500	26,300	26,800*
	90	67.8				22,300	23,700	23,900*				23,900*	16,600	22,100	23,300
	100	65.0				18,700	20,200	20,500*				20,500*	13,700	18,500	19,800
	110	62.3				15,900	17,200	17,800*				17,800*	11,300	15,600	16,800
	120	59.4				13,500	14,700	15,400*				15,400*	9,400	13,300	14,400
	130	56.5				11,600	12,700	13,300*				13,300*	7,700	11,300	12,400
	140	53.4				9,900	10,900	11,500*				11,500*	6,400	9,700	10,600
	150	50.3				8,500	9,400	9,800*				9,800*	5,200	8,300	9,200
	160	46.9				7,300	8,200	8,400*				8,400*	4,200	7,100	7,900
	170	43.4				6,200	7,000	7,100*				7,100*	3,300	6,000	6,800
180	39.7	5,200	6,000*	6,000*	6,000*	2,500	5,100	5,800							
190	35.6	4,400	4,900*	4,900*	4,900*	--	4,200	4,900							
200	31.0	3,600	4,000*	4,000*	4,000*	--	3,500	4,000*							
210	25.8	3,000	3,100*	3,100*	3,100*	--	2,800	3,100*							
220	19.3	2,400	2,400*	2,400*	2,400*	--	2,200	2,400*							
230	9.2	--	--	--	--	--	--	--							
240' (73.15 m)	45	80.0	↓	↓	↓	34,600*	34,600*	34,600*	↓	↓	↓	34,600*	34,600*	34,600*	
	50	78.7				33,100*	33,100*	33,100*				33,100*	33,100*	33,100*	
	60	76.2				29,700*	29,700*	29,700*				29,700*	29,700*	29,700*	
	70	73.8				26,600*	26,600*	26,600*				26,600*	25,000	26,600*	26,600*
	80	71.3				23,700*	23,700*	23,700*				23,700*	20,200	23,700*	23,700*
	90	68.7				20,800*	20,800*	20,800*				20,800*	16,400	20,800*	20,800*
	100	66.1				18,400	18,500*	18,500*				18,500*	13,400	18,200	18,500*
	110	63.5				15,600	15,900*	15,900*				15,900*	11,000	15,300	15,900*
	120	60.8				13,200	13,600*	13,600*				13,600*	9,100	13,000	13,600*
	130	58.0				11,300	11,700*	11,700*				11,700*	7,400	11,100	11,700*
	140	55.2				9,600	10,000*	10,000*				10,000*	6,100	9,400	10,000*
	150	52.2				8,200	8,400*	8,400*				8,400*	4,900	8,000	8,400*
	160	49.1				7,000	7,100*	7,100*				7,100*	3,900	6,800	7,100*
	170	45.9				5,800*	5,800*	5,800*				5,800*	3,000	5,700	5,800*
180	42.5	4,800*	4,800*	4,800*	4,800*	2,200	4,800*	4,800*							
190	38.8	3,800*	3,800*	3,800*	3,800*	--	3,800*	3,800*							
200	34.8	2,900*	2,900*	2,900*	2,900*	--	2,900*	2,900*							
210	30.4	2,100*	2,100*	2,100*	2,100*	--	2,100*	2,100*							

- 7 -



# HC-238H Pick & Carry Capacities

Boom Length (ft.)	Load Radius (ft.)	Boom Angle (degree)	Capacities (lbs.) - On Tires - 1 mph					
			Over Rear					
			0 + 0 cwt.	"A" + 0 cwt.	"AB" + 0 cwt.	"AB" + "A" cwt.	"ABC" + 0 cwt.	"ABC" + "A" cwt.
50' (15.24 m)	12	79.6	68,900	104,100	107,700*	111,000*	104,000*	↑
	13	78.4	61,100	92,400	104,000*	107,200*	100,400*	
	14	77.2	54,800	83,100	100,600*	103,700*	97,100*	
	15	76.1	49,500	75,400	97,400*	100,400*	94,000*	
	16	74.9	45,100	68,900	91,000	97,200*	91,000*	
	17	73.7	41,500	63,500	83,900	94,300*	88,300*	
	18	72.5	38,300	58,700	77,700	91,500*	85,700*	
	19	71.3	35,500	54,600	72,400	88,900*	83,200*	
	20	70.1	33,100	51,000	67,700	85,600	80,900*	
	25	63.8	24,300	38,000	50,800	64,600	67,200	
	30	57.3	18,900	29,900	40,300	51,400	53,600	
35	50.1	15,100	24,400	33,200	42,500	44,300		
40	42.2	12,400	20,500	27,900	36,000	37,600		
50	19.8	8,600	15,000	20,900	27,200	28,400		
60' (18.29 m)	13	80.0	58,800	89,000	102,200*	105,400*	98,700*	↑
	14	79.4	55,000	83,300	100,100*	103,200*	96,600*	
	15	78.4	49,700	75,500	96,900*	99,900*	93,500*	
	16	77.4	45,300	69,000	91,100	96,800*	90,600*	
	17	76.5	41,700	63,600	84,000	93,800*	87,900*	
	18	75.5	38,400	58,800	77,800	91,000*	85,300*	
	19	74.5	35,600	54,700	72,500	88,500*	82,800*	
	20	73.5	33,200	51,100	67,700	85,700	80,500*	
	25	68.4	24,300	38,100	50,800	64,600	67,300	
	30	63.2	18,900	30,000	40,400	51,500	53,600	
	35	57.7	15,200	24,500	33,200	42,600	44,400	
40	51.9	12,400	20,500	28,000	36,100	37,600		
50	38.4	8,700	15,100	21,000	27,300	28,500		
60	18.1	6,300	11,500	16,300	21,600	22,500		
70' (21.34 m)	15	80.0	50,000	75,600	96,300*	99,300*	92,900*	N/A
	16	79.3	46,000	69,800	91,800	96,500*	90,300*	
	17	78.4	42,300	64,300	84,700	93,600*	87,700*	
	18	77.6	39,100	59,500	78,400	90,800*	85,100*	
	19	76.7	36,200	55,300	73,000	88,300*	82,600*	
	20	75.9	33,700	51,600	68,300	85,800*	80,300*	
	25	71.6	24,700	38,500	51,200	65,000	67,600	
	30	67.3	19,300	30,300	40,700	51,800	53,900	
	35	62.8	15,400	24,700	33,500	42,800	44,600	
	40	58.0	12,700	20,800	28,200	36,300	37,800	
	50	47.8	8,900	15,200	21,200	27,400	28,600	
60	35.4	6,400	11,700	16,500	21,700	22,700		
70	16.7	4,600	9,100	13,200	17,600	18,500		
80' (24.38 m)	17	80.0	42,800	65,000	85,700	93,500*	87,500*	↓
	17	79.9	42,300	64,200	84,600	93,000*	87,100*	
	18	79.2	39,000	59,400	78,400	90,300*	84,500*	
	19	78.4	36,200	55,200	72,900	87,800*	82,100*	
	20	77.7	33,700	51,500	68,200	85,300*	79,700*	
	25	74.0	24,600	38,400	51,100	64,900	67,500	
	30	70.2	19,200	30,200	40,600	51,600	53,800	
	35	66.4	15,300	24,600	33,300	42,700	44,500	
	40	62.4	12,600	20,700	28,100	36,200	37,700	
	50	54.0	8,800	15,100	21,000	27,300	28,500	
	60	44.5	6,400	11,600	16,400	21,600	22,500	
70	33.1	4,600	9,000	13,200	17,600	18,400		
80	15.6	3,300	7,100	10,700	14,600	15,300		
90' (27.43 m)	19	80.0	37,200	56,800	75,000	88,300*	82,500*	↓
	19	79.7	36,100	55,100	72,800	87,200*	81,500*	
	20	79.1	33,500	51,400	68,000	84,800*	79,200*	
	25	75.8	24,500	38,300	51,000	64,700	67,400	
	30	72.5	19,000	30,000	40,400	51,500	53,600	
	35	69.1	15,200	24,400	33,200	42,600	44,300	
	40	65.7	12,400	20,500	27,900	36,000	37,500	
	50	58.5	8,600	15,000	20,900	27,100	28,300	
	60	50.7	6,200	11,400	16,300	21,500	22,500	
70	41.8	4,500	8,900	13,000	17,500	18,300		
80	31.1	3,200	7,000	10,600	14,500	15,200		
90	14.7	2,200	5,600	8,700	12,100	12,800		
100' (30.48 m)	20	80.0	32,700	50,200	66,600	83,400*	77,900*	80,500*
	25	77.3	24,300	38,100	50,800	64,600	67,200	71,000*
	30	74.3	18,900	29,900	40,300	51,300	53,400	63,000*
	35	71.3	15,000	24,300	33,000	42,400	44,200	53,400
40	68.3	12,200	20,300	27,700	35,800	37,400	45,300	

# HC-238H Pick & Carry Capacities

Boom Length (ft.)	Load Radius (ft.)	Boom Angle (degree)	Capacities (lbs.) - On Tires - 1 mph					
			Over Rear					
			0 + 0 ctwt.	"A" + 0 ctwt.	"AB" + 0 ctwt.	"AB" + "A" ctwt.	"ABC" + 0 ctwt.	"ABC" + "A" ctwt.
100' (30.48 m)	50	61.9	8,500	14,800	20,700	26,900	28,100	34,500
	60	55.2	6,000	11,200	16,100	21,300	22,300	27,400
	70	47.9	4,300	8,700	12,900	17,300	18,100	22,500
	80	39.6	3,000	6,900	10,500	14,300	15,000	18,900
	90	29.5	2,000	5,400	8,600	12,000	12,700	16,100
	100	14.0	--	4,300	7,100	10,100	10,700	13,800
110' (33.53 m)	22	80.0	↑	44,900	59,600	75,400	73,700*	76,200*
	25	78.4		37,900	50,600	64,400	67,000	70,400*
	30	75.8		29,700	40,100	51,100	53,200	62,500*
	35	73.1		24,000	32,800	42,200	44,000	53,200
	40	70.3		20,100	27,500	35,600	37,100	45,100
	50	64.7		14,600	20,500	26,700	27,900	34,300
	60	58.8		11,000	15,900	21,100	22,100	27,200
	70	52.4		8,500	12,700	17,100	17,900	22,400
	80	45.5		6,700	10,300	14,100	14,800	18,700
	90	37.7		5,200	8,400	11,800	12,500	15,900
	100	28.1		4,100	6,900	10,000	10,600	13,600
110	13.3	3,100	5,700	8,500	9,000	11,800		
120' (36.58 m)	24	80.0	↑	40,300	53,800	68,200	69,700*	72,100*
	25	79.4		37,700	50,400	64,200	66,800	69,900*
	30	77.0		29,500	39,900	50,800	53,000	61,900*
	35	74.5		23,800	32,600	41,900	43,700	52,900
	40	72.0		19,900	27,300	35,400	36,900	45,000
	50	66.9		14,400	20,300	26,500	27,700	34,000
	60	61.6		10,800	15,700	20,900	21,900	26,900
	70	56.0		8,300	12,400	16,900	17,700	22,100
	80	50.1		6,500	10,000	13,900	14,600	18,500
	90	43.5		5,000	8,200	11,600	12,300	15,700
	100	36.0		3,900	6,700	9,800	10,400	13,400
	110	26.9		3,000	5,500	8,300	8,800	11,600
120	12.7	2,200	4,500	7,000	7,500	10,100		
130' (39.62 m)	26	80.0	N/A	36,500	48,800	62,200	64,800	68,400*
	30	78.0		29,200	39,600	50,600	52,700	61,400*
	35	75.7		23,600	32,300	41,700	43,500	52,700
	40	73.4		19,700	27,000	35,100	36,700	44,800
	50	68.8		14,200	20,100	26,200	27,400	33,800
	60	64.0		10,600	15,400	20,700	21,700	26,700
	70	59.0		8,100	12,200	16,600	17,500	21,900
	80	53.7		6,200	9,800	13,700	14,400	18,200
	90	48.0		4,800	8,000	11,400	12,000	15,400
	100	41.7		3,700	6,500	9,600	10,100	13,200
	110	34.6		2,700	5,300	8,100	8,600	11,400
	120	25.8		2,000	4,300	6,800	7,300	9,900
	130	12.2		--	3,500	5,800	8,000	8,600
140' (42.67 m)	27	80.0	↑	44,700	57,000	59,300	65,100*	
	30	78.9		39,400	50,400	52,500	60,900*	
	35	76.8		32,100	41,500	43,300	52,400	
	40	74.7		26,800	34,900	36,400	44,500	
	50	70.4		19,800	26,000	27,200	33,500	
	60	66.0		15,200	20,400	21,400	26,400	
	70	61.4		12,000	16,400	17,200	21,700	
	80	56.6		9,600	13,400	14,200	18,000	
	90	51.6		7,700	11,100	11,800	15,200	
	100	46.1		6,300	9,300	9,900	13,000	
	110	40.1		5,100	7,800	8,400	11,100	
	120	33.3		4,100	6,600	7,100	9,600	
	130	24.8		3,300	5,600	6,000	8,400	
	140	11.8		2,500	4,700	5,100	7,300	
150' (45.72 m)	29	80.0	↓	41,000	52,400	54,600	61,800*	
	30	79.6		39,200	50,100	52,200	60,300*	
	35	77.7		31,900	41,200	43,000	52,200	
	40	75.7		26,600	34,600	36,200	44,300	
	50	71.7		19,600	25,700	26,900	33,300	
	60	67.6		15,000	20,200	21,200	26,200	
	70	63.4		11,700	16,100	17,000	21,400	
	80	59.1		9,300	13,200	13,900	17,800	
	90	54.5		7,500	10,900	11,500	14,900	
	100	49.7		6,000	9,100	9,700	12,700	
	110	44.5		4,800	7,600	8,100	10,900	
	120	38.7		3,800	6,400	6,900	9,400	

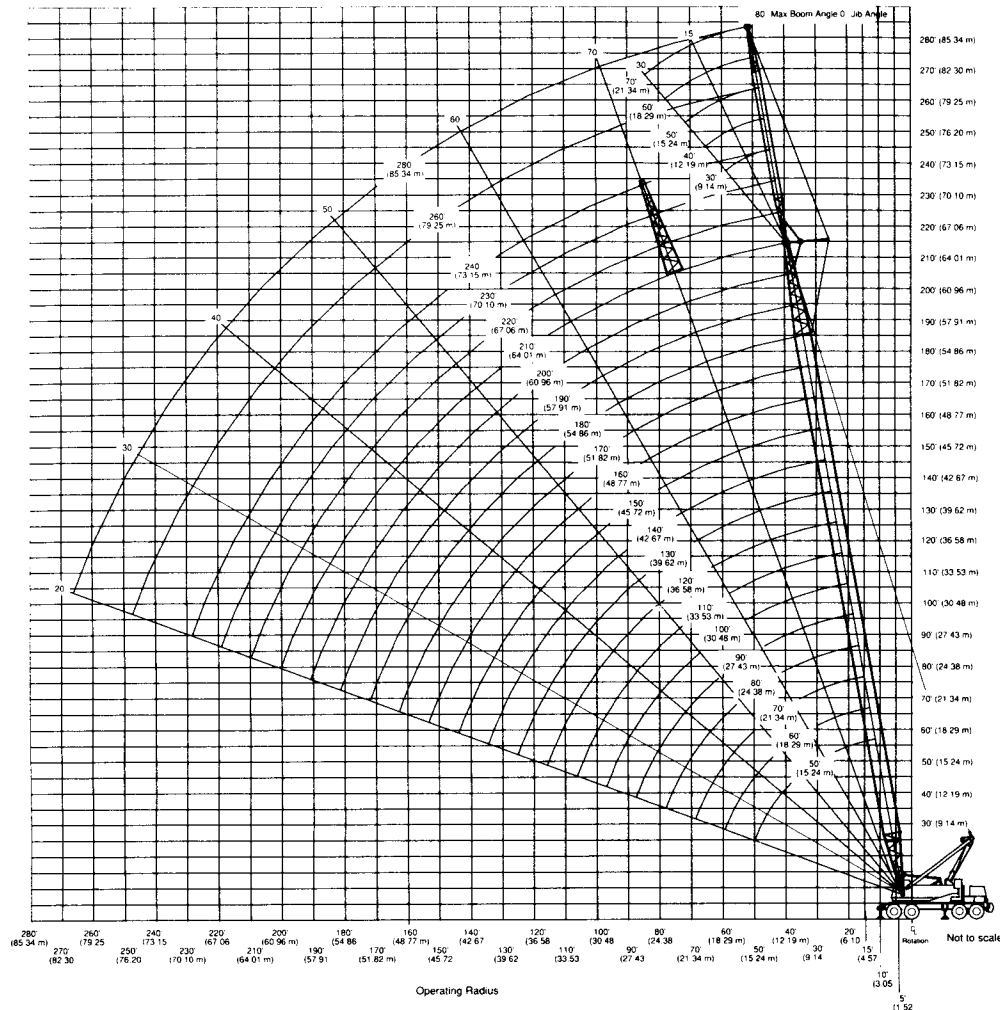
# HC-238H Pick & Carry Capacities

Boom Length (ft.)	Load Radius (ft.)	Boom Angle (degree)	Capacities (lbs.) - On Tires - 1 mph					
			Over Rear					
			0 + 0 ctwt.	"A" + 0 ctwt.	"AB" + 0 ctwt.	"AB" + "A" ctwt.	"ABC" + 0 ctwt.	"ABC" + "A" ctwt.
150' (45.72 m)	130	32.1			3,000	5,300	5,800	8,100
	140	24.0			2,300	4,500	4,900	7,000
	150	11.4			--	3,700	4,100	6,100
160' (48.77 m)	31	80.0			37,700	48,300	50,400	58,700*
	35	78.4			31,600	41,000	42,800	51,900
	40	76.6			26,300	34,400	35,900	44,000
	50	72.9			19,300	25,500	26,700	33,000
	60	69.1			14,700	19,900	20,900	25,900
	70	65.2			11,500	15,900	16,700	21,200
	80	61.2			9,100	12,900	13,700	17,500
	90	57.0			7,200	10,600	11,300	14,700
	100	52.7			5,800	8,800	9,400	12,400
	110	48.0			4,600	7,300	7,900	10,600
	120	43.0			3,600	6,100	6,600	9,100
	130	37.4			2,800	5,100	5,500	7,900
	140	31.1			2,100	4,200	4,600	6,800
150	23.2			--	3,400	3,800	5,800	
160	11.0			--	2,800	3,100	5,000	
170' (51.82 m)	32	80.0				44,700	46,700	55,900*
	35	79.1				40,700	42,500	51,700
	40	77.4				34,100	35,700	43,800
	50	73.9				25,200	26,400	32,700
	60	70.4				19,700	20,700	25,600
	70	66.8				15,600	16,500	20,900
	80	63.0				12,700	13,400	17,200
	90	59.2				10,400	11,000	14,400
	100	55.2				8,600	9,100	12,200
	110	51.0				7,100	7,600	10,400
	120	46.5				5,900	6,300	8,900
	130	41.6				4,800	5,300	7,600
	140	36.3				4,000	4,400	6,500
150	30.1		N/A	N/A	3,200	3,600	5,600	
160	22.5				2,500	2,900	4,800	
170	10.7				--	2,300	4,000	
180' (54.86 m)	34	80.0				41,700	43,600	52,900
	35	79.7				40,500	42,300	51,400
	40	78.1				33,900	35,400	43,500
	50	74.8				24,900	26,100	32,500
	60	71.5				19,400	20,400	25,400
	70	68.1				15,400	16,200	20,600
	80	64.7				12,400	13,100	17,000
	90	61.1				10,100	10,800	14,200
	100	57.4			N/A	8,300	8,900	11,900
	110	53.5				6,800	7,300	10,100
	120	49.4				5,600	6,100	8,600
	130	45.1				4,600	5,000	7,300
	140	40.4				3,700	4,100	6,300
150	35.2				2,900	3,300	5,300	
160	29.3				2,300	2,600	4,500	
170	21.9				--	2,000	3,800	
180	10.4				--	--	3,200	
190' (57.91 m)	36	80.0				--	40,600	49,400
	40	78.8				--	35,200	43,200
	50	75.7				--	25,900	32,200
	60	72.5				--	20,100	25,100
	70	69.3				--	16,000	20,400
	80	66.1				--	12,900	16,700
	90	62.7				--	10,500	13,900
	100	59.3				--	8,600	11,700
	110	55.7				--	7,100	9,800
	120	52.0				--	5,800	8,300
	130	48.0				--	4,700	7,100
	140	43.8				--	3,800	6,000
	150	39.3				--	3,000	5,100
160	34.3				--	2,400	4,200	
170	28.5				--	--	3,500	
180	21.3				--	--	2,900	
190	10.1				--	--	2,300	
200' (60.96 m)	38	80.0				--	--	46,200
	40	79.3				--	--	43,000
	50	76.4				--	--	31,900

# HC-238H Pick & Carry Capacities

Boom Length (ft.)	Load Radius (ft.)	Boom Angle (degree)	Capacities (lbs.) - On Tires - 1 mph					
			Over Rear					
			0 + 0 ctwt.	"A" + 0 ctwt.	"AB" + 0 ctwt.	"AB" + "A" ctwt.	"ABC" + 0 ctwt.	"ABC" + "A" ctwt.
200' (60.96 m)	60	73.4	↑	↑	↑	↑	↑	24,800
	70	70.4						20,100
	80	67.3						16,400
	90	64.2						13,600
	100	61.0						11,400
	110	57.6						9,600
	120	54.2						8,100
	130	50.6						6,800
	140	46.7						5,700
	150	42.7						4,800
	160	38.3						4,000
	170	33.4						3,300
	180	27.7						2,600
190	20.7	2,100						
200	9.9	--						
210' (64.01 m)	39	80.0	↓	↓	↓	↓	↓	43,500
	40	79.8						42,700
	50	77.1						31,700
	60	74.2						24,500
	70	71.4						19,800
	80	68.5						16,200
	90	65.5						13,300
	100	62.5						11,100
	110	59.4						9,300
	120	56.1						7,800
	130	52.8						6,500
	140	49.3						5,400
	150	45.6						4,500
160	41.6	3,700						
170	37.3	3,000						
180	32.5	2,300						
190	27.0	--						
200	20.2	--						
210	9.6	--						

# HC-238H Working Range and Lift Crane Notes



**General:**

1. Rated lifting capacities in pounds as shown on lift charts pertain to the crane as originally manufactured and normally equipped. Modifications to the crane or use of optional equipment other than that specified can result in a reduction of capacity.
2. Construction equipment can be dangerous if improperly operated or maintained. Operation and maintenance of the crane must be in compliance with the information in the Operator's, Parts and Safety Manuals supplied with the crane. If these manuals are missing, order replacements through the distributor.
3. The operator and other personnel associated with the crane shall read and fully understand the latest applicable American National Standards Institute (ANSI) safety standards for cranes.
4. The maximum allowable lifting capacities are based on crane standing level on firm supporting surface.

**Set-Up:**

1. The crane shall be leveled on a firm supporting surface. Depending on the nature of the supporting surface, it may be necessary to have structural supports under the pontoons to spread the load to a larger bearing surface.
2. For required parts of line, see wire rope strength and winch performance tables in Crane Rating Manual.

**Lift Crane Operation:**

1. Capacities shown are in pounds and are not more than 85% of the tipping loads on outriggers or 75% of the tipping loads on tires with the crane standing level on firm supporting surface. A deduction must be made from these capacities for weight of hook block, hook, sling, grapple, load weighing device, etc. When using main hook while jib is attached, reduce capacities by values shown in Crane Rating Manual. See Operator's Manual for all limitations when raising or lowering attachment.
2. The capacities marked with an asterisk (\*) are based on factors other than those which would cause a tipping condition.

3. For recommended reeving, parts of line, wire rope type and wire rope inspection, see wire rope strength chart, Operator's Manual and Parts Manual.
4. Load ratings are based on freely suspended loads and make no allowances for such factors as the effect of the wind, ground conditions, and operating speeds. The operator shall therefore reduce load ratings in order to take these conditions into account.
5. The 26' (7.92 m) live mast must be used for all capacities listed.
6. The least stable rated condition is over the side.
7. The jib cannot be used on a boom longer than 210' (64.01 m).
8. Maximum main boom length without jib is 240' (73.15 m).
9. Do not operate at radii and boom lengths where the Crane Rating Manual lists no capacity. Do not use longer booms or jibs than those listed in the Crane Rating Manual. Any of the above can cause a tipping condition, or boom and jib failure.
10. These capacities apply only to the crane as originally manufactured and normally equipped by Link-Belt Construction Equipment Company.

**Link-Belt Construction Equipment Company** Lexington, Kentucky

A unit of Sumitomo Construction Machinery Co., Ltd.

© Link-Belt is a registered trademark. Copyright 1997. All rights reserved. We are constantly improving our products and therefore reserve the right to change designs and specifications.

# HC-238H Tubular Jib Capacities

62" x 70" (1.57 x 1.78 m) Tube Boom - 30" x 36" (.75 x .91 m) Tube Jib - 360° Rotation - "ABC" + "A" Counterweights

Boom Length (feet)	Jib Length (feet)	Jib Load Radius (feet)	Jib Angle to Boom									
			0 Degrees			15 Degrees			30 Degrees			
			Boom Angle (degree)	Jib Pt. Height (feet)	Jib Capacity (lbs.)	Boom Angle (degree)	Jib Pt. Height (feet)	Jib Capacity (lbs.)	Boom Angle (degree)	Jib Pt. Height (feet)	Jib Capacity (lbs.)	
100' (30.48 m)	30	30	78.0	133.9	29,400*							
	30	35	75.7	132.7	28,800*	79.1	132.5	26,300*				
	30	40	73.4	131.3	28,100*	76.8	131.1	25,700*	79.8	129.4	22,200*	
	30	50	68.8	127.8	26,800*	72.1	127.8	24,400*	75.0	126.0	20,000*	
	30	60	64.0	123.4	25,500*	67.2	123.4	23,100*	70.1	121.6	18,300*	
	30	70	59.0	118.0	24,100*	62.2	118.0	21,700*	64.9	116.1	17,000*	
	30	80	53.7	111.3	22,700*	56.8	111.4	19,600*	59.4	109.3	15,800*	
	30	90	48.0	103.1	20,800*	51.1	103.2	17,300*	53.5	100.9	14,900*	
	30	100	41.7	93.0	18,300*	44.8	93.1	15,700*	46.9	90.4	14,100*	
	30	110	34.6	80.2	15,900*	37.5	80.2	15,300*				
30	120	25.8	63.0	15,300*								
100' (30.48 m)	40	30	78.9	143.9	26,400*							
	40	35	76.8	142.8	25,900*							
	40	40	74.7	141.5	25,300*	78.8	141.1	23,200*				
	40	50	70.4	138.2	24,200*	74.5	138.0	21,300*	78.2	135.8	16,900*	
	40	60	66.0	134.1	22,800*	70.0	134.0	19,300*	73.7	131.8	15,400*	
	40	70	61.4	129.1	20,800*	65.4	129.1	17,300*	68.9	126.7	14,000*	
	40	80	56.6	123.0	18,700*	60.6	123.1	15,600*	64.0	120.6	12,500*	
	40	90	51.6	115.6	16,500*	55.5	115.8	14,000*	58.7	113.1	11,500*	
	40	100	46.1	106.8	14,800*	50.0	107.0	12,300*	53.0	104.0	10,900*	
	40	110	40.1	96.0	13,000*	43.9	96.2	11,400*				
40	120	33.3	82.5	11,500*	36.9	82.5	10,600*					
40	130	24.8	64.4	10,600*								
100' (30.48 m)	50	30	79.6	154.0	24,000*							
	50	35	77.7	153.0	23,400*							
	50	40	75.7	151.8	22,900*							
	50	50	71.7	148.7	21,900*	76.6	148.5	19,300*				
	50	60	67.6	144.9	20,800*	72.5	144.8	17,100*	76.8	142.3	12,300*	
	50	70	63.4	140.3	18,700*	68.2	140.3	14,700*	72.4	137.7	11,200*	
	50	80	59.1	134.7	16,300*	63.8	134.8	12,300*	67.9	132.1	10,000*	
	50	90	54.5	128.0	13,800*	59.2	128.3	11,200*	63.1	125.4	8,800*	
	50	100	49.7	120.1	11,800*	54.3	120.5	9,900*	58.0	117.3	8,100*	
	50	110	44.5	110.7	10,500*	49.0	111.1	8,600*	52.5	107.6	7,500*	
50	120	38.7	99.4	9,000*	43.1	99.7	7,900*					
50	130	32.1	85.2	8,000*	36.4	85.3	7,200*					
50	140	24.0	66.3	7,200*								
100' (30.48 m)	60	35	78.4	163.3	21,200*							
	60	40	76.6	162.2	20,700*							
	60	50	72.9	159.4	19,800*	78.4	159.2	18,000*				
	60	60	69.1	155.9	18,700*	74.5	155.9	15,800*	79.6	153.1	10,800*	
	60	70	65.2	151.6	17,400*	70.6	151.7	13,400*	75.5	148.9	8,800*	
	60	80	61.2	146.5	15,000*	66.6	146.7	11,000*	71.3	143.9	7,900*	
	60	90	57.0	140.4	12,500*	62.4	140.8	8,800*	67.0	137.8	7,000*	
	60	100	52.7	133.3	9,900*	57.9	133.8	7,900*	62.4	130.6	6,100*	
	60	110	48.0	124.9	8,300*	53.2	125.5	7,000*	57.5	122.0	5,700*	
	60	120	43.0	115.0	7,300*	48.1	115.6	5,900*	52.1	111.6	5,300*	
60	130	37.4	103.1	6,200*	42.4	103.6	5,600*					
60	140	31.1	88.4	5,600*	35.9	88.7	5,100*					
60	150	23.2	68.8	5,100*								
100' (30.48m)	70	35	79.1	173.7	18,700*							
	70	40	77.4	172.7	18,200*							
	70	50	73.9	170.1	17,300*	80.0	170.1	15,700*				

# HC-238H Tubular Jib Capacities - 360° Rotation - "ABC" + "A" Counterweights

Boom Length (feet)	Jib Length (feet)	Jib Load Radius (feet)	Jib Angle to Boom								
			0 Degrees			15 Degrees			30 Degrees		
			Boom Angle (degree)	Jib Pt. Height (feet)	Jib Capacity (lbs.)	Boom Angle (degree)	Jib Pt. Height (feet)	Jib Capacity (lbs.)	Boom Angle (degree)	Jib Pt. Height (feet)	Jib Capacity (lbs.)
100' (30.48 m)	70	60	70.4	166.9	16,400*	76.4	167.1	14,600*			
	70	70	66.8	163.0	15,400*	72.7	163.3	12,900*	78.2	160.4	9,200*
	70	80	63.0	158.3	14,000*	69.0	158.7	11,100*	74.3	155.8	7,700*
	70	90	59.2	152.8	12,200*	65.1	153.4	9,300*	70.3	150.3	6,900*
	70	100	55.2	146.3	10,300*	61.0	147.0	7,700*	66.1	143.8	6,100*
	70	110	51.0	138.8	8,300*	56.8	139.6	6,900*	61.7	136.2	5,200*
	70	120	46.5	130.0	7,200*	52.2	130.9	6,000*	56.9	127.1	4,700*
	70	130	41.6	119.7	6,300*	47.3	120.5	5,000*	51.7	116.2	4,400*
	70	140	36.3	107.3	5,200*	41.8	108.1	4,600*	45.8	102.9	4,000*
	70	150	30.1	92.0	4,600*	35.5	92.5	4,200*			
	70	160	22.5	71.8	4,100*						
110' (33.53 m)	30	30	78.9	144.1	29,700*						
	30	35	76.8	143.0	29,100*	79.9	142.7	26,500*			
	30	40	74.7	141.7	28,500*	77.8	141.5	25,900*			
	30	50	70.4	138.5	27,300*	73.4	138.4	24,800*	76.2	136.6	20,400*
	30	60	66.0	134.5	26,000*	69.0	134.4	23,600*	71.6	132.6	18,800*
	30	70	61.4	129.5	24,800*	64.4	129.5	22,400*	66.9	127.6	17,400*
	30	80	56.6	123.5	23,500*	59.6	123.5	20,700*	62.0	121.5	16,300*
	30	90	51.6	116.2	22,200*	54.5	116.3	18,600*	56.8	114.1	15,300*
	30	100	46.1	107.4	20,100*	49.0	107.5	16,400*	51.1	105.1	14,600*
	30	110	40.1	96.7	17,700*	42.9	96.8	15,600*			
	30	120	33.3	83.3	15,800*	36.0	83.2	15,200*			
	30	130	24.8	65.2	15,200*						
110' (33.53 m)	40	30	79.6	154.1	26,600*						
	40	35	77.7	153.0	26,100*						
	40	40	75.7	151.8	25,600*	79.6	151.4	23,400*			
	40	50	71.7	148.8	24,500*	75.6	148.6	21,800*	79.1	146.3	17,100*
	40	60	67.6	145.0	23,500*	71.5	144.9	20,000*	74.9	142.6	15,700*
	40	70	63.4	140.4	21,700*	67.2	140.3	18,100*	70.5	138.0	14,500*
	40	80	59.1	134.8	19,800*	62.8	134.8	16,300*	66.0	132.4	13,100*
	40	90	54.5	128.2	17,800*	58.2	128.3	14,900*	61.3	125.7	11,800*
	40	100	49.7	120.3	16,000*	53.3	120.5	13,300*	56.2	117.6	11,300*
	40	110	44.5	110.9	14,300*	48.1	111.1	11,900*	50.7	107.9	10,600*
	40	120	38.7	99.6	12,500*	42.2	99.7	11,200*			
	40	130	32.1	85.4	11,400*	35.5	85.4	10,400*			
	40	140	24.0	66.6	10,500*						
110' (33.53 m)	50	35	78.4	163.2	23,700*						
	50	40	76.6	162.1	23,200*						
	50	50	72.9	159.3	22,200*	77.4	159.0	19,800*			
	50	60	69.1	155.7	21,200*	73.6	155.6	17,700*	77.7	152.9	12,600*
	50	70	65.2	151.4	19,700*	69.7	151.4	15,600*	73.7	148.7	11,500*
	50	80	61.2	146.3	17,500*	65.7	146.3	13,300*	69.5	143.6	10,400*
	50	90	57.0	140.2	15,200*	61.4	140.3	11,700*	65.2	137.4	9,300*
	50	100	52.7	133.0	12,800*	57.0	133.3	10,600*	60.6	130.2	8,400*
	50	110	48.0	124.7	11,400*	52.3	124.9	9,400*	55.7	121.6	7,900*
	50	120	43.0	114.7	10,100*	47.2	115.0	8,400*	50.4	111.2	7,300*
	50	130	37.4	102.8	8,700*	41.6	103.0	7,800*			
	50	140	31.1	88.0	7,900*	35.0	88.0	7,100*			
	50	150	23.2	68.4	7,100*						
110' (33.53 m)	60	35	79.1	173.5	21,400*						
	60	40	77.4	172.5	21,000*						
	60	50	73.9	169.8	20,000*	79.1	169.6	18,200*			

Boom Length (feet)	Jib Length (feet)	Jib Load Radius (feet)	Jib Angle to Boom								
			0 Degrees			15 Degrees			30 Degrees		
			Boom Angle (degree)	Jib Pt. Height (feet)	Jib Capacity (lbs.)	Boom Angle (degree)	Jib Pt. Height (feet)	Jib Capacity (lbs.)	Boom Angle (degree)	Jib Pt. Height (feet)	Jib Capacity (lbs.)
110' (33.53 m)	60	60	70.4	166.5	19,100*	75.5	166.5	16,400*			
	60	70	66.8	162.6	18,100*	71.9	162.6	14,200*	76.5	159.7	8,900*
	60	80	63.0	157.8	16,100*	68.1	158.0	11,900*	72.6	155.0	8,200*
	60	90	59.2	152.2	13,800*	64.2	152.5	9,600*	68.6	149.5	7,400*
	60	100	55.2	145.7	11,400*	60.2	146.1	8,300*	64.4	142.9	6,500*
	60	110	51.0	138.1	8,900*	55.9	138.6	7,500*	60.0	135.1	5,800*
	60	120	46.5	129.3	8,000*	51.3	129.8	6,600*	55.2	126.0	5,500*
	60	130	41.6	118.9	7,100*	46.4	119.4	5,800*	50.0	115.1	5,200*
	60	140	36.3	106.4	6,000*	40.9	106.9	5,500*			
	60	150	30.1	91.1	5,500*	34.6	91.2	5,000*			
60	160	22.5	70.8	5,000*							
110' (33.53 m)	70	35	79.7	183.9	18,900*						
	70	40	78.1	182.9	18,400*						
	70	50	74.8	180.5	17,500*						
	70	60	71.5	177.5	16,700*	77.2	177.5	15,000*			
	70	70	68.1	173.8	15,800*	73.8	174.0	13,400*	79.0	171.0	9,500*
	70	80	64.7	169.4	14,700*	70.3	169.8	11,700*	75.3	166.7	7,900*
	70	90	61.1	164.3	13,100*	66.6	164.8	10,000*	71.6	161.7	7,200*
	70	100	57.4	158.3	11,300*	62.9	158.9	8,300*	67.7	155.7	6,400*
	70	110	53.5	151.4	9,500*	59.0	152.1	7,300*	63.7	148.7	5,600*
	70	120	49.4	143.5	7,800*	54.9	144.2	6,500*	59.4	140.5	4,900*
	70	130	45.1	134.2	6,900*	50.5	135.0	5,600*	54.8	130.9	4,600*
	70	140	40.4	123.4	6,000*	45.7	124.2	4,900*	49.7	119.4	4,200*
	70	150	35.2	110.5	5,000*	40.4	111.2	4,500*			
70	160	29.3	94.6	4,600*	34.2	95.0	4,100*				
70	170	21.9	73.7	4,100*							
130' (39.62 m)	30	35	78.4	163.5	29,600*						
	30	40	76.6	162.4	29,100*	79.3	162.1	26,400*			
	30	50	72.9	159.6	28,000*	75.6	159.4	25,400*	78.0	157.6	21,100*
	30	60	69.1	156.1	26,900*	71.8	156.0	24,300*	74.1	154.2	19,500*
	30	70	65.2	151.9	25,800*	67.9	151.8	23,300*	70.2	149.9	18,200*
	30	80	61.2	146.8	24,700*	63.8	146.8	22,200*	66.0	144.9	17,100*
	30	90	57.0	140.8	23,600*	59.6	140.9	20,700*	61.7	138.8	16,200*
	30	100	52.7	133.8	22,000	55.2	133.8	18,900*	57.2	131.6	15,400*
	30	110	48.0	125.4	19,100	50.5	125.5	17,000*	52.4	123.1	14,700*
	30	120	43.0	115.6	16,700	45.5	115.6	15,800*	47.2	112.9	14,100*
	30	130	37.4	103.7	14,700	39.8	103.7	14,900			
	30	140	31.1	89.0	13,000	33.4	88.8	13,200			
	30	150	23.2	69.5	11,600						
130' (39.62 m)	40	35	79.1	173.5	26,500*						
	40	40	77.4	172.4	26,100*						
	40	50	73.9	169.8	25,100*	77.3	169.4	22,600*			
	40	60	70.4	166.5	24,200*	73.8	166.2	21,000*	76.8	163.8	16,200*
	40	70	66.8	162.5	23,200*	70.1	162.3	19,400*	73.1	159.9	15,100*
	40	80	63.0	157.7	21,600*	66.4	157.6	17,700*	69.2	155.1	14,100*
	40	90	59.2	152.1	19,900*	62.5	152.1	16,200*	65.3	149.5	12,900*
	40	100	55.2	145.6	18,100*	58.5	145.7	14,900*	61.1	142.9	11,800*
	40	110	51.0	138.0	16,400*	54.2	138.1	13,600*	56.7	135.2	11,300*
	40	120	46.5	129.2	15,000*	49.7	129.3	12,200*	52.0	126.1	10,800*
	40	130	41.6	118.8	13,400*	44.8	118.8	11,500*			
	40	140	36.3	106.3	11,900*	39.3	106.3	10,900*			
	40	150	30.1	91.0	11,200*						
40	160	22.5	70.7	10,300*							



# HC-238H Tubular Jib Capacities - 360° Rotation - "ABC" + "A" Counterweights

Boom Length (feet)	Jib Length (feet)	Jib Load Radius (feet)	Jib Angle to Boom									
			0 Degrees			15 Degrees			30 Degrees			
			Boom Angle (degree)	Jib Pt. Height (feet)	Jib Capacity (lbs.)	Boom Angle (degree)	Jib Pt. Height (feet)	Jib Capacity (lbs.)	Boom Angle (degree)	Jib Pt. Height (feet)	Jib Capacity (lbs.)	
130' (39.62 m)	50	35	79.7	183.6	24,000*							
	50	40	78.1	182.6	23,600*							
	50	50	74.8	180.1	22,700*	78.9	179.7	20,600*				
	50	60	71.5	177.0	21,800*	75.5	176.7	18,700*	79.2	173.9	13,500*	
	50	70	68.1	173.3	20,900*	72.1	173.1	16,900*	75.7	170.2	12,000*	
	50	80	64.7	168.8	19,400*	68.6	168.7	15,000*	72.1	165.8	11,100*	
	50	90	61.1	163.6	17,400*	65.0	163.6	13,000*	68.4	160.6	10,100*	
	50	100	57.4	157.5	15,400*	61.3	157.6	11,700*	64.5	154.6	9,200*	
	50	110	53.5	150.6	13,300*	57.4	150.7	10,700*	60.5	147.5	8,400*	
	50	120	49.4	142.5	11,700*	53.3	142.7	9,700*	56.3	139.2	7,900*	
	50	130	45.1	133.2	10,700*	48.9	133.4	8,600*	51.7	129.6	7,400*	
	50	140	40.4	122.3	9,500*	44.1	122.5	8,000*				
	50	150	35.2	109.3	8,400*	38.8	109.4	7,500*				
50	160	29.3	93.4	7,700*								
50	170	21.9	72.4	7,000*								
130' (39.62 m)	60	40	78.8	192.9	21,300*							
	60	50	75.7	190.6	20,500*							
	60	60	72.5	187.7	19,700*	77.1	187.4	17,300*				
	60	70	69.3	184.2	18,800*	73.9	184.1	15,400*	78.0	181.0	9,900*	
	60	80	66.1	180.0	17,400*	70.6	180.0	13,400*	74.7	176.9	8,600*	
	60	90	62.7	175.1	15,900*	67.2	175.3	11,400*	71.2	172.1	7,900*	
	60	100	59.3	169.5	13,800*	63.8	169.8	9,300*	67.6	166.5	7,200*	
	60	110	55.7	163.1	11,700*	60.1	163.4	8,300*	63.9	160.0	6,400*	
	60	120	52.0	155.7	9,500*	56.4	156.1	7,600*	60.0	152.5	5,800*	
	60	130	48.0	147.3	8,300*	52.4	147.7	6,800*	55.8	143.7	5,600*	
	60	140	43.8	137.5	7,500*	48.1	138.0	5,900*	51.4	133.6	5,300*	
	60	150	39.3	126.2	6,600*	43.5	126.6	5,600*				
	60	160	34.3	112.8	5,800*	38.3	113.0	5,300*				
60	170	28.5	96.3	5,400*								
60	180	21.3	74.7	5,000*								
130' (39.62 m)	70	40	79.3	203.3	18,700*							
	70	50	76.4	201.2	18,000*							
	70	60	73.4	198.5	17,200*	78.5	198.4	15,300*				
	70	70	70.4	195.2	16,400*	75.5	195.2	14,200*				
	70	80	67.3	191.3	15,500*	72.4	191.5	12,700*	77.0	188.3	8,700*	
	70	90	64.2	186.8	14,100*	69.2	187.1	11,300*	73.7	183.8	7,600*	
	70	100	61.0	181.6	12,900*	66.0	182.0	9,700*	70.4	178.6	6,900*	
	70	110	57.6	175.7	11,500*	62.6	176.2	8,200*	66.9	172.7	6,200*	
	70	120	54.2	168.9	9,800*	59.1	169.5	7,300*	63.3	165.8	5,500*	
	70	130	50.6	161.2	8,200*	55.4	161.9	6,600*	59.4	157.9	4,900*	
	70	140	46.7	152.4	7,300*	51.6	153.1	5,800*	55.4	148.8	4,600*	
	70	150	42.7	142.3	6,500*	47.4	143.0	5,000*	51.1	138.1	4,300*	
	70	160	38.3	130.5	5,600*	42.9	131.2	4,700*	46.3	125.6	4,000*	
70	170	33.4	116.7	4,800*	37.9	117.1	4,300*					
70	180	27.7	99.7	4,500*								
70	190	20.7	77.5	4,000*								
150' (45.72 m)	30	35	79.7	183.9	29,900*							
	30	40	78.1	182.9	29,500*							
	30	50	74.8	180.4	28,500*	77.3	180.2	25,800*	79.4	178.3	21,700*	
	30	60	71.5	177.4	27,600*	73.9	177.2	24,900*	76.0	175.3	20,200*	
	30	70	68.1	173.7	26,600*	70.5	173.6	24,000*	72.6	171.6	18,900*	
	30	80	64.7	169.3	25,600*	67.0	169.2	23,100*	69.0	167.3	17,800*	
30	90	61.1	164.2	24,700*	63.4	164.1	22,100*	65.3	162.1	16,900*		

Boom Length (feet)	Jib Length (feet)	Jib Load Radius (feet)	Jib Angle to Boom								
			0 Degrees			15 Degrees			30 Degrees		
			Boom Angle (degree)	Jib Pt. Height (feet)	Jib Capacity (lbs.)	Boom Angle (degree)	Jib Pt. Height (feet)	Jib Capacity (lbs.)	Boom Angle (degree)	Jib Pt. Height (feet)	Jib Capacity (lbs.)
150' (45.72 m)	30	100	57.4	158.2	21,400	59.7	158.2	20,700*	61.5	156.1	16,100*
	30	110	53.5	151.3	18,500	55.8	151.3	18,900	57.6	149.0	15,400*
	30	120	49.4	143.3	16,100	51.7	143.3	16,500	53.4	140.9	14,700*
	30	130	45.1	134.0	14,200	47.3	134.1	14,400	48.9	131.4	14,200*
	30	140	40.4	123.2	12,500	42.6	123.2	12,700			
	30	150	35.2	110.3	11,000	37.3	110.2	11,200			
	30	160	29.3	94.4	9,800						
	170	21.9	73.5	8,700							
150' (45.72 m)	40	40	78.8	192.9	26,400*						
	40	50	75.7	190.5	25,600*	78.7	190.1	23,200*			
	40	60	72.5	187.6	24,800*	75.6	187.3	21,800*	78.3	184.8	16,700*
	40	70	69.3	184.1	23,900*	72.4	183.8	20,400*	75.0	181.3	15,600*
	40	80	66.1	179.9	22,900*	69.1	179.7	18,900*	71.7	177.2	14,700*
	40	90	62.7	175.1	21,400*	65.7	175.0	17,400*	68.2	172.4	13,800*
	40	100	59.3	169.5	19,900*	62.2	169.4	16,100*	64.7	166.7	12,700*
	40	110	55.7	163.0	18,300*	58.6	163.0	15,000*	61.0	160.2	11,800*
	40	120	52.0	155.6	16,300	54.9	155.7	13,800*	57.1	152.7	11,400*
	40	130	48.0	147.2	14,300	50.9	147.2	12,600*	53.0	144.0	10,900*
	40	140	43.8	137.4	12,600	46.6	137.5	11,700*	48.6	134.0	10,400*
	40	150	39.3	126.1	11,200	42.0	126.1	11,200*			
	40	160	34.3	112.6	10,000	36.9	112.5	10,200			
40	170	28.5	96.2	8,900							
150' (45.72 m)	50	40	79.3	203.0	23,900*						
	50	50	76.4	200.8	23,100*						
	50	60	73.4	198.0	22,300*	77.1	197.6	19,600*			
	50	70	70.4	194.7	21,500*	74.0	194.4	17,900*	77.2	191.5	12,400*
	50	80	67.3	190.7	20,200*	70.9	190.5	16,200*	74.1	187.6	11,600*
	50	90	64.2	186.2	18,600*	67.8	186.1	14,500*	70.8	183.0	10,700*
	50	100	61.0	180.9	17,200*	64.5	180.9	12,700*	67.5	177.8	9,900*
	50	110	57.6	174.9	15,500*	61.1	174.9	11,700*	64.1	171.7	9,000*
	50	120	54.2	168.0	13,600*	57.6	168.1	10,800*	60.5	164.8	8,400*
	50	130	50.6	160.3	12,000*	54.0	160.4	9,900*	56.7	156.8	8,000*
	50	140	46.7	151.4	11,100*	50.1	151.5	8,900*	52.7	147.7	7,500*
	50	150	42.7	141.2	10,000*	46.0	141.3	8,200*	48.4	137.1	7,100*
	50	160	38.3	129.4	8,900*	41.5	129.5	7,800*			
	50	170	33.4	115.5	8,200*	36.5	115.4	7,200*			
50	180	27.7	98.4	7,600*							
150' (45.72 m)	60	40	79.8	213.3	21,600*						
	60	50	77.1	211.2	20,900*						
	60	60	74.2	208.6	20,100*	78.4	208.2	18,000*			
	60	70	71.4	205.4	19,300*	75.5	205.2	16,400*	79.3	202.0	10,600*
	60	80	68.5	201.7	17,800*	72.6	201.6	14,600*	76.3	198.4	8,900*
	60	90	65.5	197.4	16,300*	69.6	197.4	12,800*	73.2	194.1	8,300*
	60	100	62.5	192.5	15,000*	66.5	192.6	11,000*	70.1	189.2	7,700*
	60	110	59.4	186.9	13,800*	63.4	187.0	9,100*	66.8	183.6	7,000*
	60	120	56.1	180.5	11,900*	60.1	180.7	8,300*	63.5	177.1	6,300*
	60	130	52.8	173.3	9,900*	56.7	173.6	7,700*	60.0	169.8	5,800*
	60	140	49.3	165.1	8,600*	53.2	165.5	7,000*	56.3	161.4	5,600*
	60	150	45.6	155.9	7,800*	49.4	156.2	6,200*	52.4	151.8	5,300*
	60	160	41.6	145.3	7,000*	45.4	145.7	5,800*	48.2	140.7	5,100*
	60	170	37.3	133.1	6,200*	41.0	133.4	5,500*			
60	180	32.5	118.7	5,700*	36.2	118.8	5,200*				
60	190	27.0	101.2	5,300*							

# HC-238H Tubular Jib Capacities - 360° Rotation - "ABC" + "A" Counterweights

Boom Length (feet)	Jib Length (feet)	Jib Load Radius (feet)	Jib Angle to Boom											
			0 Degrees			15 Degrees			30 Degrees					
			Boom Angle (degree)	Jib Pt. Height (feet)	Jib Capacity (lbs.)	Boom Angle (degree)	Jib Pt. Height (feet)	Jib Capacity (lbs.)	Boom Angle (degree)	Jib Pt. Height (feet)	Jib Capacity (lbs.)			
150' (45.72 m)	70	50	77.7	221.7	18,300*									
	70	60	75.0	219.3	17,600*	79.6	219.0	15,600*						
	70	70	72.3	216.3	16,900*	76.9	216.2	14,800*						
	70	80	69.5	212.8	16,000*	74.1	212.9	13,500*	78.3	209.5	9,200*			
	70	90	66.7	208.8	14,500*	71.3	208.9	12,200*	75.4	205.5	7,900*			
	70	100	63.8	204.2	13,200*	68.4	204.4	10,900*	72.4	200.9	7,300*			
	70	110	60.9	198.9	12,100*	65.4	199.3	9,500*	69.3	195.7	6,700*			
	70	120	57.9	193.0	11,100*	62.3	193.5	8,000*	66.2	189.7	6,100*			
	70	130	54.7	186.3	10,100*	59.2	186.9	7,400*	62.9	182.9	5,400*			
	70	140	51.5	178.8	8,600*	55.9	179.4	6,700*	59.5	175.2	4,900*			
	70	150	48.1	170.4	7,500*	52.4	171.0	6,000*	55.9	166.5	4,600*			
	70	160	44.5	160.8	6,800*	48.8	161.4	5,300*	52.1	156.5	4,400*			
	70	170	40.6	149.9	6,000*	44.9	150.4	4,800*	48.0	145.0	4,100*			
	70	180	36.4	137.3	5,200*	40.6	137.7	4,500*						
70	190	31.8	122.5	4,700*	35.8	122.7	4,200*							
70	200	26.4	104.5	4,400*										
170' (51.82 m)	30	40	79.3	203.3	29,800*									
	30	50	76.4	201.1	29,000*	78.6	200.8	26,200*						
	30	60	73.4	198.4	28,100*	75.6	198.1	25,400*	77.5	196.2	20,700*			
	30	70	70.4	195.1	27,300*	72.6	194.9	24,500*	74.4	193.0	19,500*			
	30	80	67.3	191.2	26,400*	69.5	191.1	23,700*	71.3	189.1	18,400*			
	30	90	64.2	186.7	24,300	66.3	186.6	22,900*	68.1	184.6	17,500*			
	30	100	61.0	181.5	20,900	63.1	181.4	21,400	64.8	179.4	16,700*			
	30	110	57.6	175.5	18,000	59.7	175.5	18,400	61.4	173.3	16,000*			
	30	120	54.2	168.7	15,600	56.2	168.8	16,000	57.8	166.5	15,400*			
	30	130	50.6	161.0	13,600	52.6	161.0	13,900	54.1	158.6	14,200			
	30	140	46.7	152.2	11,900	48.7	152.2	12,200	50.2	149.6	12,400			
	30	150	42.7	142.1	10,400	44.6	142.1	10,700						
	30	160	38.3	130.3	9,200	40.2	130.3	9,400						
	30	170	33.4	116.4	8,100	35.2	116.3	8,300						
30	180	27.7	99.5	7,100										
170' (51.82 m)	40	40	79.8	213.3	26,700*									
	40	50	77.1	211.2	26,000*	79.8	210.7	23,500*						
	40	60	74.2	208.5	25,200*	77.0	208.1	22,400*	79.5	205.6	17,100*			
	40	70	71.4	205.4	24,400*	74.1	205.0	21,100*	76.6	202.5	16,000*			
	40	80	68.5	201.7	23,700*	71.2	201.4	19,800*	73.6	198.8	15,200*			
	40	90	65.5	197.4	22,600*	68.2	197.2	18,500*	70.5	194.5	14,400*			
	40	100	62.5	192.4	20,500*	65.2	192.3	17,200*	67.4	189.6	13,600*			
	40	110	59.4	186.8	18,100	62.0	186.7	16,100*	64.2	183.9	12,600*			
	40	120	56.1	180.4	15,700	58.8	180.4	15,000*	60.9	177.5	11,800*			
	40	130	52.8	173.2	13,700	55.4	173.2	14,000*	57.4	170.2	11,400*			
	40	140	49.3	165.1	12,100	51.8	165.1	12,400	53.8	161.8	11,000*			
	40	150	45.6	155.8	10,600	48.1	155.8	10,900	49.9	152.3	10,500*			
	40	160	41.6	145.2	9,400	44.1	145.2	9,600						
	40	170	37.3	133.0	8,300	39.7	132.9	8,500						
40	180	32.5	118.6	7,300	34.9	118.4	7,500							
40	190	27.0	101.1	6,400										
170' (51.82 m)	50	50	77.7	221.4	23,400*									
	50	60	75.0	218.9	22,700*	78.3	218.4	20,200*						
	50	70	72.3	215.8	22,000*	75.5	215.5	18,700*	78.5	212.4	13,100*			
	50	80	69.5	212.3	20,500*	72.8	212.0	17,200*	75.7	209.0	12,000*			
	50	90	66.7	208.2	18,900*	69.9	208.0	15,700*	72.8	204.9	11,200*			
	50	100	63.8	203.5	17,500*	67.0	203.4	14,100*	69.8	200.3	10,500*			

Boom Length (feet)	Jib Length (feet)	Jib Load Radius (feet)	Jib Angle to Boom								
			0 Degrees			15 Degrees			30 Degrees		
			Boom Angle (degree)	Jib Pt. Height (feet)	Jib Capacity (lbs.)	Boom Angle (degree)	Jib Pt. Height (feet)	Jib Capacity (lbs.)	Boom Angle (degree)	Jib Pt. Height (feet)	Jib Capacity (lbs.)
170' (51.82 m)	50	110	60.9	198.2	16,300*	64.1	198.2	12,500*	66.8	194.9	9,700*
	50	120	57.9	192.2	15,100*	61.0	192.2	11,600*	63.7	188.9	8,900*
	50	130	54.7	185.5	13,900	57.9	185.5	10,800*	60.4	182.1	8,400*
	50	140	51.5	177.9	12,200	54.6	178.0	10,000*	57.0	174.3	8,000*
	50	150	48.1	169.4	10,700	51.1	169.5	9,100*	53.5	165.6	7,600*
	50	160	44.5	159.7	9,500	47.5	159.8	8,400*	49.7	155.6	7,200*
	50	170	40.6	148.8	8,400	43.6	148.8	8,000*			
	50	180	36.4	136.1	7,400	39.3	136.1	7,500*			
	50	190	31.8	121.3	6,600	34.6	121.1	6,800			
	50	200	26.4	103.2	5,800						
170' (51.82 m)	60	50	78.2	231.7	21,200*						
	60	60	75.6	229.3	20,500*	79.4	228.9	18,300*			
	60	70	73.1	226.5	19,800*	76.8	226.1	17,200*			
	60	80	70.4	223.1	18,100*	74.2	222.9	15,600*	77.6	219.5	9,600*
	60	90	67.8	219.2	16,600*	71.5	219.1	14,000*	74.8	215.7	8,600*
	60	100	65.0	214.8	15,200*	68.8	214.8	12,300*	72.0	211.3	8,100*
	60	110	62.3	209.8	14,100*	66.0	209.9	10,600*	69.1	206.3	7,500*
	60	120	59.4	204.2	13,000*	63.1	204.3	8,900*	66.2	200.7	6,900*
	60	130	56.5	197.9	12,100*	60.1	198.1	8,300*	63.1	194.3	6,300*
	60	140	53.4	190.8	10,300*	57.0	191.0	7,700*	60.0	187.1	5,800*
	60	150	50.3	182.9	8,800*	53.8	183.2	7,100*	56.7	179.0	5,600*
	60	160	46.9	174.0	8,100*	50.5	174.3	6,400*	53.2	169.8	5,400*
	60	170	43.4	164.0	7,400*	46.9	164.3	5,900*	49.5	159.4	5,100*
	60	180	39.7	152.7	6,700*	43.1	152.9	5,600*			
	60	190	35.6	139.7	5,900*	38.9	139.8	5,300*			
	60	200	31.0	124.4	5,600*	34.3	124.3	5,000*			
60	210	25.8	105.9	5,200							
170' (51.82 m)	70	50	78.7	242.1	18,600*						
	70	60	76.2	239.9	17,900*						
	70	70	73.8	237.2	17,300*	78.0	237.0	15,200*			
	70	80	71.3	234.1	16,200*	75.5	234.0	14,200*	79.3	230.4	9,500*
	70	90	68.7	230.4	14,700*	72.9	230.4	13,000*	76.7	226.9	8,500*
	70	100	66.1	226.3	13,500*	70.3	226.4	11,800*	74.0	222.8	7,700*
	70	110	63.5	221.6	12,400*	67.7	221.8	10,500*	71.3	218.1	7,100*
	70	120	60.8	216.3	11,400*	64.9	216.6	9,300*	68.5	212.8	6,600*
	70	130	58.0	210.4	10,500*	62.1	210.7	7,900*	65.6	206.8	6,000*
	70	140	55.2	203.8	9,700*	59.3	204.2	7,400*	62.6	200.1	5,400*
	70	150	52.2	196.4	8,900*	56.3	196.9	6,800*	59.6	192.6	4,900*
	70	160	49.1	188.2	7,800*	53.1	188.7	6,100*	56.3	184.1	4,500*
	70	170	45.9	179.0	7,100*	49.9	179.6	5,500*	52.9	174.6	4,100*
	70	180	42.5	168.7	6,400*	46.4	169.3	4,900*	49.3	163.8	3,600*
	70	190	38.8	157.1	5,700*	42.6	157.5	4,600*			
	70	200	34.8	143.7	4,900*	38.6	144.0	4,400*			
70	210	30.4	128.1	4,600*	34.0	128.1	4,100*				
70	220	25.3	109.1	4,300*							
190' (57.91 m)	30	50	77.7	221.6	29,300*	79.6	221.3	26,500*			
	30	60	75.0	219.2	28,600*	76.9	218.9	25,700*	78.7	216.9	21,200*
	30	70	72.3	216.2	27,800*	74.2	216.0	25,000*	75.9	214.0	20,000*
	30	80	69.5	212.7	27,000*	71.4	212.5	24,200*	73.1	210.6	19,000*
	30	90	66.7	208.7	23,700	68.6	208.6	23,500*	70.3	206.5	18,100*
	30	100	63.8	204.1	20,300	65.7	204.0	20,900	67.3	201.9	17,300*
	30	110	60.9	198.8	17,400	62.8	198.7	17,900	64.3	196.6	16,600*
	30	120	57.9	192.9	15,000	59.7	192.8	15,400	61.2	190.6	15,800

# HC-238H Tubular Jib Capacities - 360° Rotation - "ABC" + "A" Counterweights

Boom Length (feet)	Jib Length (feet)	Jib Load Radius (feet)	Jib Angle to Boom								
			0 Degrees			15 Degrees			30 Degrees		
			Boom Angle (degree)	Jib Pt. Height (feet)	Jib Capacity (lbs.)	Boom Angle (degree)	Jib Pt. Height (feet)	Jib Capacity (lbs.)	Boom Angle (degree)	Jib Pt. Height (feet)	Jib Capacity (lbs.)
190' (57.91 m)	30	130	54.7	186.2	13,000	56.6	186.2	13,400	58.0	183.9	13,700
	30	140	51.5	178.7	11,300	53.3	178.7	11,600	54.7	176.2	11,900
	30	150	48.1	170.2	9,900	49.9	170.2	10,200	51.2	167.6	10,400
	30	160	44.5	160.6	8,600	46.2	160.6	8,900	47.5	157.7	9,000
	30	170	40.6	149.7	7,500	42.4	149.6	7,700			
	30	180	36.4	137.1	6,500	38.1	136.9	6,700			
	30	190	31.8	122.3	5,700	33.4	122.0	5,800			
	30	200	26.4	104.3	4,900						
190' (57.91 m)	40	50	78.2	231.7	26,300*						
	40	60	75.6	229.3	25,600*	78.2	228.8	22,900*			
	40	70	73.1	226.4	24,900*	75.6	226.0	21,800*	77.8	223.4	16,400*
	40	80	70.4	223.1	24,200*	72.9	222.7	20,600*	75.1	220.1	15,600*
	40	90	67.8	219.2	23,400*	70.2	218.9	19,400*	72.4	216.3	14,800*
	40	100	65.0	214.8	20,500	67.5	214.5	18,200*	69.6	211.8	14,100*
	40	110	62.3	209.7	17,500	64.7	209.6	17,000*	66.8	206.8	13,400*
	40	120	59.4	204.1	15,100	61.8	204.0	15,700	63.8	201.2	12,400*
	40	130	56.5	197.8	13,100	58.9	197.7	13,700	60.8	194.8	11,400*
	40	140	53.4	190.7	11,500	55.8	190.7	11,900	57.7	187.6	10,100*
	40	150	50.3	182.8	10,000	52.6	182.8	10,400	54.4	179.5	9,000*
	40	160	46.9	173.9	8,800	49.3	173.9	9,100	51.0	170.5	8,200*
	40	170	43.4	163.9	7,700	45.7	163.9	8,000	47.3	160.2	7,300*
	40	180	39.7	152.6	6,700	41.9	152.5	7,000			
	40	190	35.6	139.6	5,800	37.8	139.4	6,100			
	40	200	31.0	124.3	5,100						
40	210	25.8	105.8	4,400							
190' (57.91 m)	50	50	78.7	241.8	23,700*						
	50	60	76.2	239.5	23,100*	79.3	239.0	20,700*			
	50	70	73.8	236.8	22,400*	76.8	236.3	19,400*	79.5	233.2	13,600*
	50	80	71.3	233.6	20,500*	74.3	233.2	18,100*	76.9	230.1	12,300*
	50	90	68.7	229.9	18,900*	71.7	229.6	16,700*	74.3	226.4	11,600*
	50	100	66.1	225.7	17,600*	69.1	225.4	15,200*	71.7	222.2	11,000*
	50	110	63.5	220.9	16,300*	66.5	220.7	13,800*	69.0	217.5	10,300*
	50	120	60.8	215.5	15,200*	63.7	215.4	12,300*	66.2	212.1	9,600*
	50	130	58.0	209.6	13,300	60.9	209.5	11,600*	63.3	206.1	8,800*
	50	140	55.2	202.9	11,600	58.1	202.9	10,900*	60.4	199.4	8,000*
	50	150	52.2	195.5	10,100	55.1	195.5	10,100*	57.3	191.8	7,100*
	50	160	49.1	187.2	8,900	52.0	187.3	9,300	54.1	183.4	6,400*
	50	170	45.9	178.0	7,800	48.7	178.1	8,200	50.7	173.9	5,700*
	50	180	42.5	167.7	6,800	45.2	167.7	7,200			
	50	190	38.8	155.9	6,000	41.5	155.9	6,300			
	50	200	34.8	142.5	5,200	37.5	142.4	5,400			
50	210	30.4	126.8	4,500							
50	220	25.3	107.8	3,900							
190' (57.91 m)	60	50	79.2	252.1	21,400*						
	60	60	76.8	249.9	20,800*						
	60	70	74.4	247.3	19,800*	77.9	246.9	17,400*			
	60	80	72.0	244.3	18,100*	75.5	243.9	16,100*	78.6	240.5	10,200*
	60	90	69.6	240.7	16,700*	73.1	240.5	14,900*	76.2	237.0	8,900*
	60	100	67.2	236.7	15,400*	70.6	236.6	13,400*	73.6	233.1	8,400*
	60	110	64.6	232.2	14,200*	68.1	232.1	11,900*	71.0	228.6	7,900*
	60	120	62.1	227.2	13,100*	65.5	227.2	10,300*	68.4	223.5	7,300*
	60	130	59.5	221.5	12,200*	62.8	221.6	8,900*	65.7	217.8	6,800*
	60	140	56.8	215.2	11,400*	60.1	215.4	8,300*	62.9	211.5	6,200*

Boom Length (feet)	Jib Length (feet)	Jib Load Radius (feet)	Jib Angle to Boom								
			0 Degrees			15 Degrees			30 Degrees		
			Boom Angle (degree)	Jib Pt. Height (feet)	Jib Capacity (lbs.)	Boom Angle (degree)	Jib Pt. Height (feet)	Jib Capacity (lbs.)	Boom Angle (degree)	Jib Pt. Height (feet)	Jib Capacity (lbs.)
190' (57.91 m)	60	150	54.0	208.3	10,200	57.3	208.5	7,800*	60.0	204.4	5,700*
	60	160	51.1	200.6	8,900*	54.4	200.8	7,200*	57.0	196.5	5,100*
	60	170	48.1	192.0	7,900	51.3	192.2	6,600*	53.8	187.7	4,500*
	60	180	44.9	182.5	6,900	48.1	182.7	5,900*	50.5	177.8	4,100*
	60	190	41.6	171.8	6,100	44.7	172.0	5,700*	47.0	166.7	3,700*
	60	200	38.0	159.7	5,300	41.1	159.8	5,500*			
	60	210	34.1	145.9	4,600	37.1	145.9	4,900			
	60	220	29.8	129.8	4,000						
	60	230	24.7	110.4	3,400						
190' (57.91 m)	70	50	79.6	262.5	18,800*						
	70	60	77.3	260.4	18,200*						
	70	70	75.1	258.0	17,600*	79.0	257.7	15,400*			
	70	80	72.8	255.1	16,300*	76.7	254.9	14,300*			
	70	90	70.4	251.8	14,800*	74.3	251.7	13,200*	77.8	248.0	9,000*
	70	100	68.1	248.0	13,600*	71.9	248.0	12,200*	75.4	244.2	7,900*
	70	110	65.7	243.7	12,500*	69.5	243.8	11,300*	72.9	240.0	7,400*
	70	120	63.2	238.9	11,500*	67.1	239.1	10,200*	70.4	235.2	6,800*
	70	130	60.7	233.6	10,600*	64.6	233.8	9,100*	67.8	229.9	5,900*
	70	140	58.2	227.7	9,900*	62.0	228.0	7,900*	65.2	223.9	5,200*
	70	150	55.6	221.2	9,100*	59.3	221.5	7,400*	62.4	217.3	4,600*
	70	160	52.8	213.9	8,500*	56.6	214.4	6,800*	59.6	209.9	4,100*
	70	170	50.0	206.0	7,900*	53.7	206.4	6,300*	56.6	201.7	3,600*
	70	180	47.1	197.1	7,000	50.7	197.6	5,700*	53.6	192.6	3,300*
	70	190	44.0	187.3	6,100	47.6	187.8	5,000*	50.3	182.4	2,900*
	70	200	40.7	176.3	5,400	44.3	176.7	4,800*	46.8	170.8	2,700*
70	210	37.2	164.0	4,700	40.7	164.3	4,400*				
70	220	33.4	149.8	4,100	36.8	150.0	4,100*				
70	230	29.2	133.4	3,500	32.5	133.2	3,700				
70	240	24.3	113.5	3,000							
210' (64.01 m)	30	50	78.7	242.1	29,600*						
	30	60	76.2	239.8	28,900*	78.1	239.5	26,000*	79.7	237.5	21,600*
	30	70	73.8	237.1	28,200*	75.6	236.9	25,300*	77.2	234.9	20,500*
	30	80	71.3	234.0	26,500*	73.1	233.7	24,700*	74.6	231.8	19,500*
	30	90	68.7	230.3	23,100	70.5	230.1	22,700*	72.0	228.1	18,600*
	30	100	66.1	226.1	19,700	67.9	226.0	19,400*	69.4	224.0	16,900*
	30	110	63.5	221.4	16,800	65.3	221.3	17,400	66.7	219.2	15,000*
	30	120	60.8	216.1	14,400	62.6	216.1	14,900	64.0	213.9	13,100*
	30	130	58.0	210.2	12,400	59.8	210.2	12,800	61.1	207.9	11,700*
	30	140	55.2	203.6	10,700	56.9	203.6	11,100	58.2	201.2	10,500*
	30	150	52.2	196.2	9,300	53.9	196.2	9,600	55.2	193.8	9,400*
	30	160	49.1	188.0	8,000	50.8	188.0	8,300	52.0	185.4	8,500
	30	170	45.9	178.8	6,900	47.5	178.8	7,200	48.7	176.1	7,400
	30	180	42.5	168.5	5,900	44.1	168.5	6,200			
	30	190	38.8	156.9	5,100	40.4	156.8	5,300			
	30	200	34.8	143.5	4,300	36.4	143.3	4,500			
30	210	30.4	127.8	3,600							
30	220	25.3	108.9	3,000							
210' (64.01 m)	40	50	79.2	252.1	26,500*						
	40	60	76.8	249.9	25,900*	79.1	249.4	23,300*			
	40	70	74.4	247.3	25,300*	76.8	246.8	22,300*	78.8	244.2	16,700*
	40	80	72.0	244.2	24,600*	74.3	243.8	21,000*	76.4	241.2	15,900*
	40	90	69.6	240.7	21,000*	71.9	240.3	19,500*	73.9	237.7	15,200*
	40	100	67.2	236.7	18,900*	69.4	236.4	17,400*	71.4	233.7	14,300*
	40	110	64.6	232.2	16,900	66.9	231.9	15,400*	68.8	229.2	12,500*

# HC-238H Tubular Jib Capacities - 360° Rotation - "ABC" + "A" Counterweights

Boom Length (feet)	Jib Length (feet)	Jib Load Radius (feet)	Jib Angle to Boom								
			0 Degrees			15 Degrees			30 Degrees		
			Boom Angle (degree)	Jib Pt. Height (feet)	Jib Capacity (lbs.)	Boom Angle (degree)	Jib Pt. Height (feet)	Jib Capacity (lbs.)	Boom Angle (degree)	Jib Pt. Height (feet)	Jib Capacity (lbs.)
210' (64.01 m)	40	120	62.1	227.1	14,500	64.3	226.9	14,000*	66.2	224.1	11,000*
	40	130	59.5	221.4	12,500	61.7	221.3	12,500*	63.5	218.4	9,700*
	40	140	56.8	215.2	10,900	59.0	215.1	11,200*	60.7	212.1	8,600*
	40	150	54.0	208.2	9,400	56.2	208.1	9,900	57.9	205.0	7,800*
	40	160	51.1	200.5	8,100	53.3	200.4	8,600	54.9	197.2	6,900*
	40	170	48.1	191.9	7,100	50.2	191.9	7,400	51.8	188.4	6,200*
	40	180	44.9	182.4	6,100	47.0	182.3	6,400	48.5	178.6	5,600*
	40	190	41.6	171.7	5,200	43.7	171.6	5,500			
	40	200	38.0	159.6	4,500	40.0	159.5	4,700			
	40	210	34.1	145.8	3,800	36.1	145.6	4,000			
	40	220	29.8	129.7	3,100						
40	230	24.7	110.2	2,600							
210' (64.01 m)	50	50	79.6	262.2	24,000*						
	50	60	77.3	260.1	23,400*						
	50	70	75.1	257.6	22,700*	77.8	257.0	19,500*			
	50	80	72.8	254.6	20,300*	75.5	254.2	18,200*	78.0	251.0	12,800*
	50	90	70.4	251.3	18,800*	73.2	250.9	16,900*	75.6	247.7	12,000*
	50	100	68.1	247.4	17,300*	70.8	247.1	15,700*	73.2	243.9	11,400*
	50	110	65.7	243.1	15,700*	68.4	242.8	14,000*	70.8	239.6	10,400*
	50	120	63.2	238.2	14,000*	66.0	238.1	12,500*	68.3	234.7	8,900*
	50	130	60.7	232.9	12,700	63.4	232.7	11,000*	65.7	229.3	7,900*
	50	140	58.2	226.9	11,000	60.9	226.8	9,900*	63.1	223.3	7,100*
	50	150	55.6	220.3	9,500	58.2	220.3	8,800*	60.3	216.7	6,200*
	50	160	52.8	213.1	8,300	55.5	213.1	7,900*	57.5	209.3	5,600*
	50	170	50.0	205.0	7,200	52.6	205.0	7,100*	54.6	201.1	5,000*
	50	180	47.1	196.1	6,200	49.7	196.2	6,500*	51.6	192.0	4,400*
	50	190	44.0	186.3	5,300	46.5	186.3	5,700	48.3	181.8	4,000*
	50	200	40.7	175.2	4,600	43.2	175.2	4,900			
	50	210	37.2	162.8	3,900	39.7	162.7	4,200			
50	220	33.4	148.6	3,300	35.8	148.4	3,500				
50	230	29.2	132.1	2,700							
50	240	24.3	112.2	2,200							
210' (64.01 m)	60	50	80.0	272.5	21,600*						
	60	60	77.8	270.5	21,100*						
	60	70	75.6	268.1	19,600*	78.9	267.5	17,200*			
	60	80	73.4	265.2	18,000*	76.6	264.8	16,000*	79.5	261.3	10,800*
	60	90	71.2	262.0	16,500*	74.4	261.7	14,800*	77.3	258.1	9,400*
	60	100	68.9	258.3	15,200*	72.1	258.1	13,800*	74.9	254.5	8,600*
	60	110	66.6	254.2	14,100*	69.8	254.0	12,400*	72.6	250.4	8,200*
	60	120	64.3	249.6	12,900*	67.5	249.5	10,900*	70.2	245.8	7,400*
	60	130	61.9	244.5	11,500*	65.1	244.5	9,700*	67.7	240.7	6,500*
	60	140	59.5	238.8	10,400*	62.6	238.9	8,600*	65.2	235.0	5,700*
	60	150	57.0	232.6	9,300*	60.1	232.7	7,800*	62.6	228.7	5,100*
	60	160	54.4	225.7	8,400	57.5	225.9	6,900*	60.0	221.7	4,500*
	60	170	51.8	218.2	7,300	54.8	218.4	6,300*	57.2	214.0	4,000*
	60	180	49.0	209.9	6,300	52.0	210.1	5,700*	54.4	205.5	3,600*
	60	190	46.2	200.7	5,400	49.1	200.9	5,100*	51.3	196.0	3,300*
	60	200	43.1	190.5	4,700	46.1	190.7	4,700*	48.2	185.5	2,900*
	60	210	39.9	179.2	4,000	42.8	179.3	4,300*			
60	220	36.5	166.4	3,400	39.4	166.5	3,700				
60	230	32.8	151.9	2,800	35.5	151.7	3,100				
60	240	28.6	135.0	2,300							
210' (64.01 m)	70	60	78.2	280.9	18,500*						
	70	70	76.1	278.6	17,700*	79.8	278.2	15,400*			

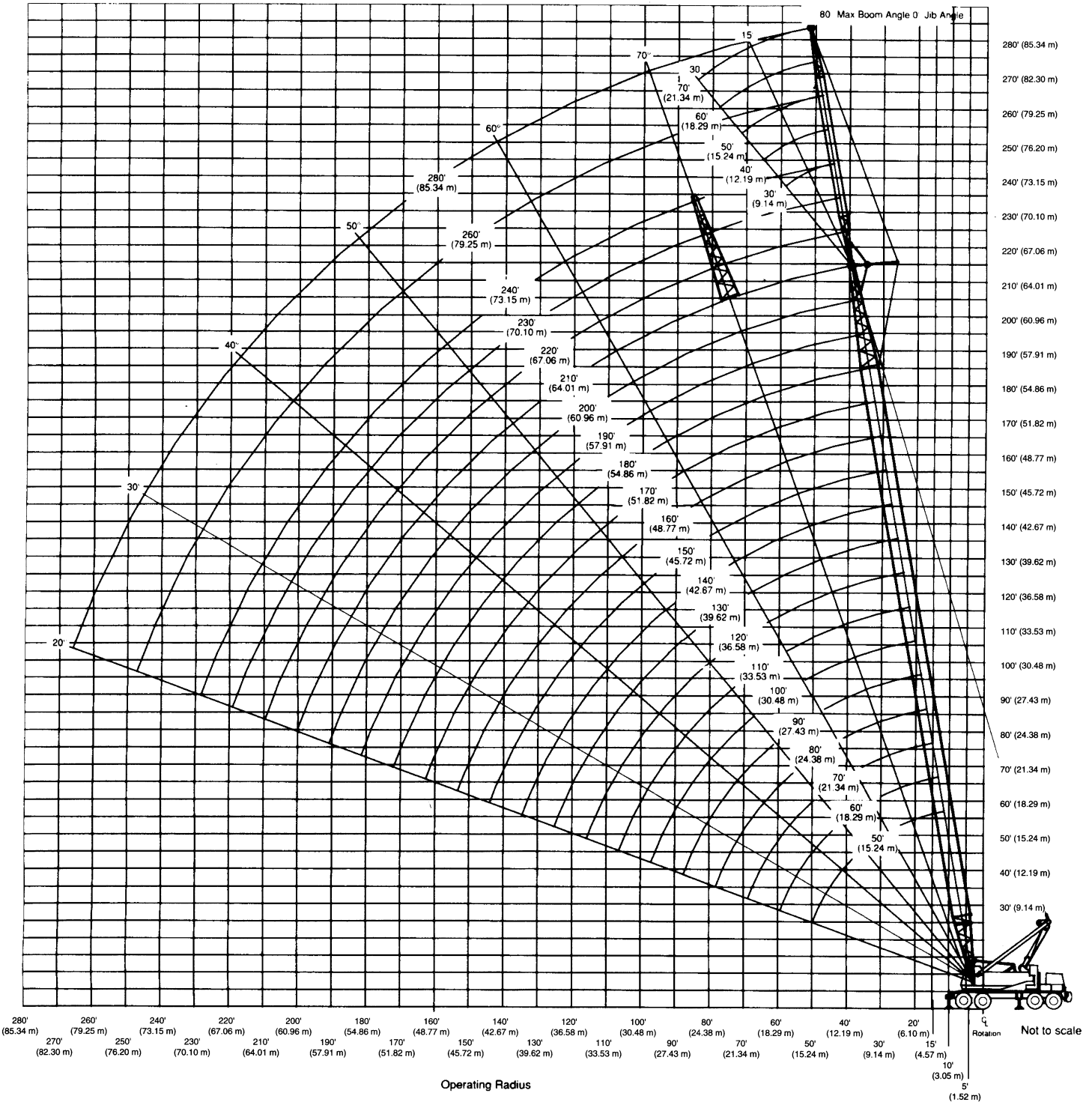
Boom Length (feet)	Jib Length (feet)	Jib Load Radius (feet)	Jib Angle to Boom								
			0 Degrees			15 Degrees			30 Degrees		
			Boom Angle (degree)	Jib Pt. Height (feet)	Jib Capacity (lbs.)	Boom Angle (degree)	Jib Pt. Height (feet)	Jib Capacity (lbs.)	Boom Angle (degree)	Jib Pt. Height (feet)	Jib Capacity (lbs.)
210' (64.01 m)	70	80	74.0	276.0	16,100*	77.7	275.7	14,200*			
	70	90	71.9	272.9	14,800*	75.5	272.7	13,100*	78.8	268.9	9,300*
	70	100	69.7	269.4	13,600*	73.3	269.3	12,100*	76.5	265.5	8,200*
	70	110	67.5	265.5	12,500*	71.1	265.5	10,800*	74.3	261.6	7,100*
	70	120	65.3	261.1	11,500*	68.9	261.2	9,600*	72.0	257.3	6,100*
	70	130	63.0	256.3	10,600*	66.6	256.4	8,500*	69.6	252.4	5,400*
	70	140	60.7	250.9	9,400*	64.2	251.1	7,600*	67.2	247.0	4,700*
	70	150	58.3	245.0	8,400*	61.8	245.3	6,800*	64.8	241.1	4,100*
	70	160	55.9	238.5	7,600*	59.4	238.9	6,000*	62.2	234.5	3,600*
	70	170	53.4	231.4	6,900*	56.8	231.8	5,500*	59.6	227.3	3,300*
	70	180	50.8	223.6	6,300*	54.2	224.1	4,900*	56.9	219.3	2,900*
	70	190	48.1	215.1	5,500	51.5	215.5	4,500*	54.1	210.5	2,600*
	70	200	45.3	205.6	4,700	48.6	206.1	4,000*	51.1	200.7	2,400*
	70	210	42.3	195.2	4,100	45.6	195.6	3,700*	48.0	189.7	2,100*
	70	220	39.2	183.6	3,400	42.5	183.9	3,400*			
	70	230	35.8	170.6	2,900	39.0	170.7	3,100*			
70	240	32.2	155.7	2,300	35.3	155.7	2,600				

## HC-238H Jib Capacity Notes

- Capacities are shown in pounds and are the maximum allowable. Capacities are based on machine standing level on firm supporting surface under ideal job conditions. Capacities are not more than 85% of the tipping loads unless marked with an asterisk (\*).
  - Asterisk indicates capacities are based on factors other than those which would cause a tipping condition.
- Capacities are for 360° swing on five outrigger jacks.
- Capacities are limited to a Link-Belt 62" x 70" (1.57 x 1.78 m) open throat tubular boom, live mast and a Link-Belt 15-ton (13.6 t), 30" x 36" (.76 x .91 m) cross section tubular jib with a 12' 7-5/8" (3.85 m) high jib strut properly assembled.
- Do not swing over side until all four outrigger beams are fully extended, all five jacks are extended, all tires are clear of the ground and machine is properly leveled on a firm supporting surface.
- Two parts of 7/8" (22 mm) diameter type "N" or "RB" wire rope is required for maximum lift.
- Capacities are for 30' (9.14 m), 40' (12.19 m), 50' (15.24 m), 60' (18.29 m), and 70' (21.34 m) jib lengths only.
- A jib cannot be used on the open throat boom that is longer than 210' (64.01 m).
- The least stable condition is over the side.
- A deduction must be made from the jib capacities for weight of hook block, hook, sling, grapple, load weighing devices, etc.
- When using main hook, while jib is attached, reduce boom capacities by the following values:
  - 30' (9.14 m) jib - 2,200 lbs. (998 kg)
  - 40' (12.19 m) jib - 2,500 lbs. (1 134 kg)
  - 50' (15.24 m) jib - 2,900 lbs. (1 315 kg)
  - 60' (18.29 m) jib - 3,200 lbs. (1 452 kg)
  - 70' (21.34 m) jib - 3,500 lbs. (1 588 kg)
- Refer to all notes in applicable Crane Rating Manual in addition to these notes.
- Capacities apply only to the machine as originally manufactured and normally equipped by Link-Belt Construction Equipment Company.



# HC-238H Tube Boom + Jib Working Range



# WIRE ROPE CAPACITY CHART

Parts of Line	7/8"		Notes
	Type N	Type RB	
1	22,700	17,520*	Capacities shown are in pounds and working-loads must not exceed the ratings on the capacity charts in this Crane Rating Manual.  Study Operator's Manual for wire rope inspection procedures.
2	45,400	35,040	
3	68,100	52,560	
4	90,800	70,080	
5	113,500	87,600	
6	136,200	105,120	
7	158,900	122,640	
8	181,600	140,160	
9	204,300	157,680	
10	227,000	175,200	
11	249,700	192,720	
12	272,400	210,240	
13	295,100	227,760	
14	317,800	245,280	
LBCE Type	Description		
N	6 X 25 (6 X 19 Class) – Filler Wire – Extra Improved Plow Steel – Preformed – I.W.R.C. – Right Lay – Regular Lay – SF = 3.5:1		
RB	19 X 19 Rotation Resistant – Extra Extra Improved Plow Steel – Preformed Right Lay – Regular Lay. Swaged – SF = 5:1		
* Use of swivel end with 1 part of line is not recommended.			